

# Operation Manual

## Sensor Taps

Master Installation, Operation  
and Maintenance Manual



## Contents

Product Description .....	3
Pre-Install Instructions .....	3
CAT 673031 Additional Instructions.....	3
Sensing Range .....	3
Commissioning Procedure .....	4
Mixers.....	5
Warranty .....	6
Trouble Shooting.....	7
All in One – Wall Mounted – CAT 673031* .....	9
Technical Data.....	10
Installation .....	11
Tube Design – Wall Mounted – CAT 6730* .....	12
Technical Data.....	13
Mortar Installation - CAT 67305.....	15
Dry Wall Installation - CAT 67306 .....	16
Deck Mounted – Boomerang – CAT 679178* .....	17
Technical Information .....	18
Installation .....	20
Deck Mounted Versions.....	22
CAT 67917* Technical Information.....	23
CAT 67910* / CAT 6791032* Technical Information .....	25
CAT 67911* Technical Information.....	28
Deck Mount Installation.....	30
Parts list.....	33
Exploded View CAT 673031 .....	33
Exploded View CAT 67305 .....	35
Exploded View CAT 67306 .....	37
Exploded View CAT 679178 .....	38
Exploded View CAT 67917 .....	39
Exploded View CAT 67910 .....	40
Exploded View CAT 6791032 .....	42
Exploded View CAT 67911 .....	44

## Product Description

- This sensor tap is designed to turn on with sensor activation and off when hands are removed.
- Features a micro-computer infrared sensor control module, low consumption microprocessor chip with stable performance and high anti-interference.
- Automatically calibrates sensing range according to the environment and stores this in the electronic chip.
- A water saving aerator is used in the faucet to prevent water splash back and allow for a soft flow.
- Supplied with both AC 240V Transformer and DC 6V Battery Pack or integrated DC 6V battery pack (CAT 673031).
- The faucet has been precisely manufactured and tested, ensuring the quality of the product satisfies international standards.

## Pre-Install Instructions



Please choose an appropriate basin before installation, avoid basins with strong reflective surfaces.

Please ensure all pipes have been flushed for at least 60 seconds and are clear of dirt and impurities (water must be clear).



Installation must be in accordance with the National Plumbing and Drainage standard – AS/NZS 3500.

## CAT 673031 Additional Instructions



When installing/removing batteries, disconnect the sensor first then remove the battery pack.

Do not use force when unplugging wires and removing the battery pack.



Ensure the flow adjustment is set correctly for your water pressure.

The sensor tap should be installed a minimum of 250mm above the washbasin.

## Sensing Range

The sensor tap will automatically calibrate the sensing range when first connected to power. Please ensure the tap has been installed in the correct and final position before connecting to power. When connected to power the sensing light will flash indicating it is in programming mode, please do not interfere or obstruct for at least 60 seconds.



### WaterMark Certified

Australian WaterMark certified with approved licence number WM-022559.



### 6 Star WELS Rating

This guarantees that the product is in accordance with the standard set under the National Water Efficiency Labelling and Standards and has the highest possible water efficiency rated 6 Stars. Licence number 1718.



### DDA Compliant

Suitable for use for AS 1428.1 design and access requirements when installed in reference to AS 1428.1 2009 Amendment 1 and the intent of the Disability Discrimination Act (DDA).

# Commissioning Procedure

Product Name / Model: \_\_\_\_\_

Date of Installation: \_\_\_\_\_

Installer / Company: \_\_\_\_\_

Installer License No.: \_\_\_\_\_

## Pre-Commissioning Checks

Tick each box when complete.

- Installation completed in accordance with AS/NZS 3500 and manufacturer's instructions
- Pipework flushed and free of debris
- Filters/strainers installed and clean
- All connections secure and leak-free

## Commissioning Testing

Record results where applicable.

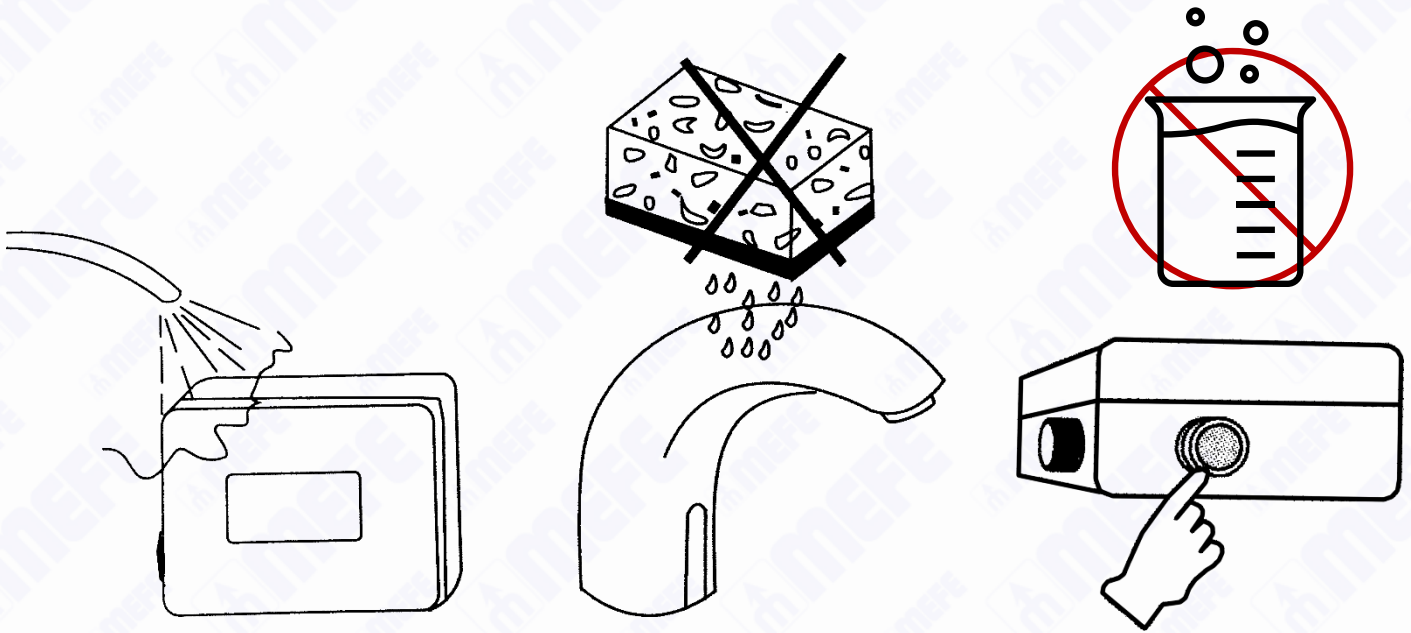
- |   |  |
|---|--|
| Sensor activation functioning correctly:              | <input type="checkbox"/> Yes <input type="checkbox"/> No |
| Sensor does not activate from nearby movement:        | <input type="checkbox"/> Yes <input type="checkbox"/> No |
| Nearby sunlight/reflection doesn't activate sensor:   | <input type="checkbox"/> Yes <input type="checkbox"/> No |
| Flow stops immediately after use:                     | <input type="checkbox"/> Yes <input type="checkbox"/> No |
| Flow stops after 60 seconds of constant use:          | <input type="checkbox"/> Yes <input type="checkbox"/> No |
| Flow stops when power is disconnect in use:           | <input type="checkbox"/> Yes <input type="checkbox"/> No |
| No water hammer or abnormal noise:                    | <input type="checkbox"/> Yes <input type="checkbox"/> No |
| Flow controller tightened to prevent removal by hand: | <input type="checkbox"/> Yes <input type="checkbox"/> No |
| Hot/cold mix correct (if applicable):                 | <input type="checkbox"/> Yes <input type="checkbox"/> No |

## Sign Off

I confirm the above commissioning procedures have been completed and the tap is performing in accordance with the manufacturer's specifications.

Installer Name: \_\_\_\_\_

Signature: \_\_\_\_\_ Date: \_\_\_\_\_



### Cleaning and Maintenance

- Regular cleaning is essential to keep your tap looking its best.
- **Do not use abrasive or chemical cleaners** (including chlorine to clean the faucet as this can dull or damage the lustre and finish of the tap).  
**Do not** rinse the control box with water.
- **Wash only** with soap water and dry with a clean, soft towel or microfibre cloth.
- **When cleaning the general area please ensure you protect the faucet from any cleaning acids or fluids as this can discolour or remove the chrome plating where applicable.**
- The filter screen on the solenoid valve inlet should be cleaned regularly to avoid excessive blockage and obstruction caused by impurities resulting in low water flow.

### Mixers

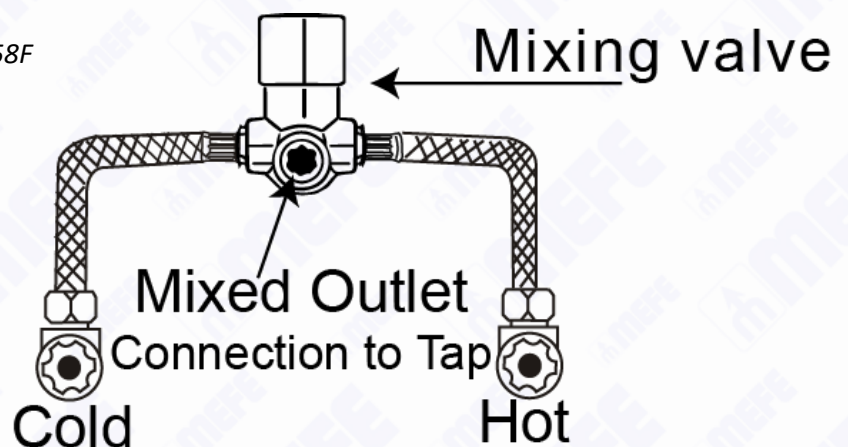
#### **Optional:** Under Bench Hot and Cold Mixer

To control water temperature you will require the following for the under-bench mixer:

Mixer Valve (CAT 67 M2)

Supplied separately:

2x Braided Hoses (673 058L), 2x Fitting 673-058F



**Optional: Surface Mounted Mixer Valve**

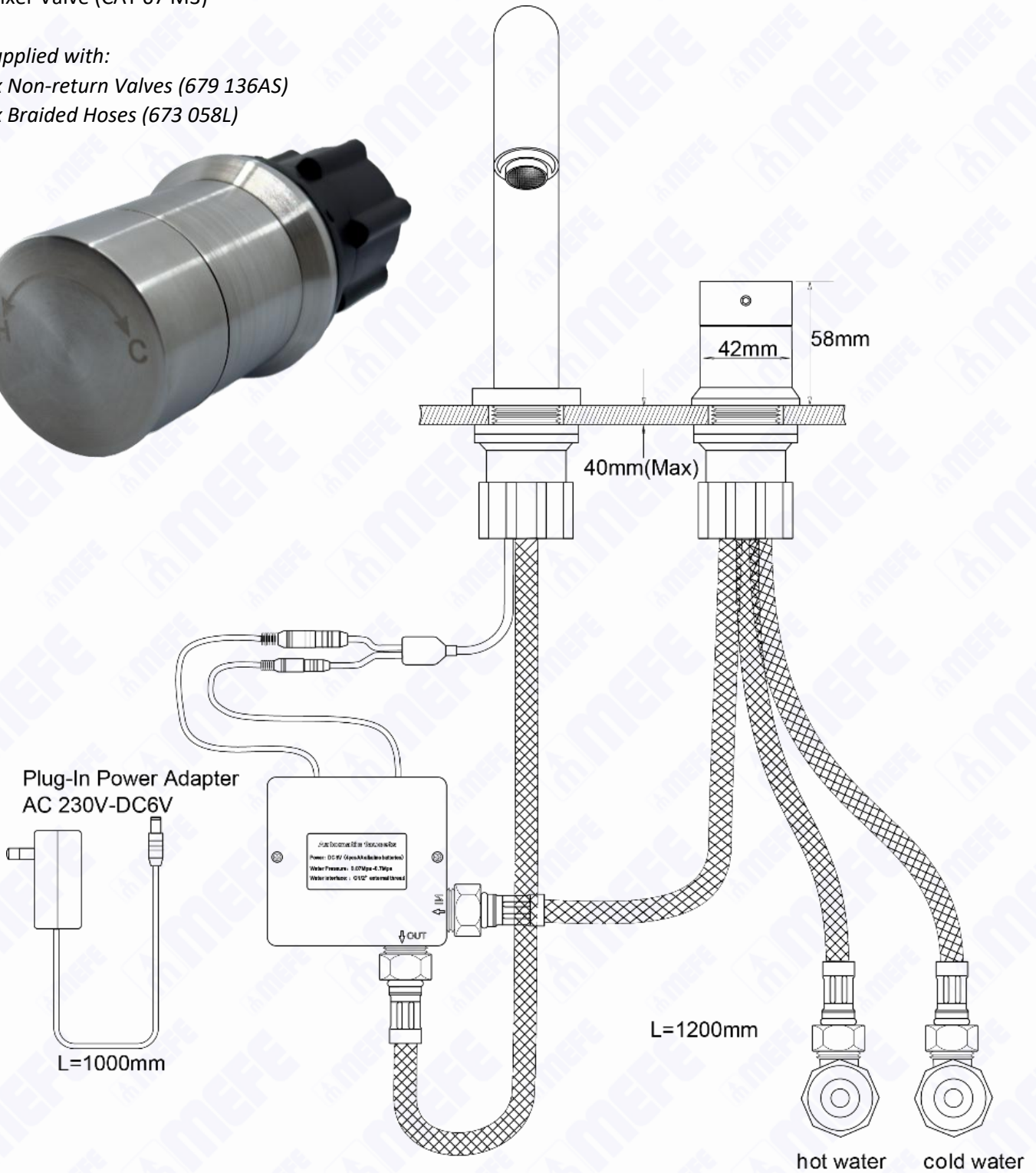
To control water temperature you will require the following for the surface mounted mixer valve:

Mixer Valve (CAT 67 M3)

Supplied with:

2x Non-return Valves (679 136AS)

3x Braided Hoses (673 058L)



**Warranty**

Our manufacturer's warranty can be viewed on our website [www.mefe.com.au](http://www.mefe.com.au) under our [Terms & Conditions](#).

## Trouble Shooting

All sensor taps are tested and confirmed in working order before dispatch. If you have a new installation issue, first verify all pre-installation instructions were followed.

### Identify Symptom

Find your issue in the list below, then follow the relevant section on the following pages.

Symptom	Go To Section
No water flows when activating the tap	Section A — No Water Flow
Water flows continuously and won't stop	Section B — Constant Water Flow
Tap activates randomly or inconsistently	Section C — Intermittent Activation
Water is leaking from the solenoid	Section D — Solenoid Leaking
Water flows but pressure is very low	Section E — Low Water Flow

### A — No Water Flow

Steps	Result	Action
Check the sensor light is on	No light	Check/replace all available power source(s). If light is still absent after replacing power, replace sensor
Hold hand in range for 5s – does light flash every 1.5s?	Light is flashing	Electrical supply is inadequate. Replace/upgrade power source
Activate sensor – do you hear a click?	Click heard, no flow	Inspect the solenoid valve for blockage; clean if required
	No click	Check solenoid wiring/connection. If issue persists, replace solenoid



After restoring power, a quick flash from the sensor confirms it has entered programming mode and is functioning. Do not interrupt and allow it to adjust for local conditions.

### B — Constant Water Flow

Steps	Result	Action
Disconnect power and sensor - does water keep flowing?	Yes — keeps flowing	Inspect the solenoid diaphragm for damage or tears. Clear any debris. Replace the diaphragm or solenoid valve if damaged.
	No — stops flowing	Reconnect sensor & power. Restart sensor programming. Ensure no reflections or obstacles are triggering the sensor. Check the power supply — replace sensor if needed.



Reflective surfaces near the sensor (mirrors, shiny tiles, water pooling in the basin) are common causes of constant activation.

### C — Intermittent Activation

Steps	Result	Action
		Confirm the sensor is mounted higher than the top of the basin
Check basin & surroundings	Reflective basin or obstacles near sensor	Ensure the basin surface is non-reflective (matte finish preferred)  Check that no objects near the sensor are causing unintended reflections
Reset sensor programming (restart power to reset programming)	Intermittent activation continues	Use a piece of cardboard to manually set the sensing distance (this eliminates reflections and limits the detection range)



If the issue occurred immediately after a new installation, double-check all pre-installation instructions were followed before replacing any components.

### D — Solenoid Leaking

Water is dripping or leaking from the solenoid valve. In most cases this is caused by reversed connections.

Steps	Result	Action
Check braided hose connections	Hoses reversed	Inlet: has a filter mesh inside the connection point, connect to water supply (in)  Outlet: open connection with no mesh or filter, connection to tap outlet (out)
	Still leaking from valve	Inspect the solenoid diaphragm for damage or tears. Clear any debris. Replace the diaphragm or solenoid valve if damaged.

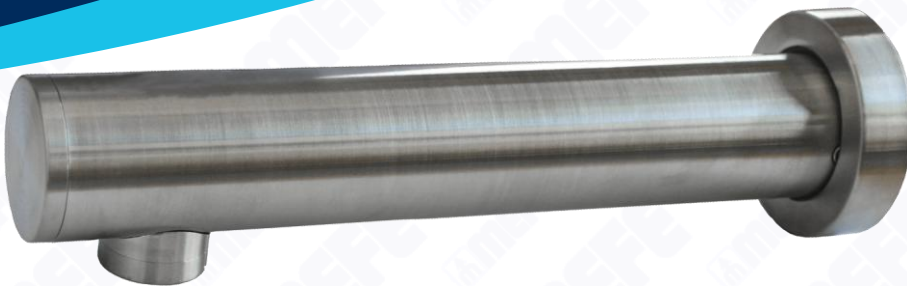
### E — Low Water Flow

Steps	Result	Action
Flush water pipe (new install)		Flush the water pipes for a minimum of 60 seconds (or until water runs clear) to clear debris from pipes that may be blocking the solenoid's valve
	Still low flow	Inspect the solenoid diaphragm for damage or tears. Clear any debris. Replace the diaphragm or solenoid valve if damaged.

# Operation Manual

## Automatic Sensor Tap

All in One – Wall Mounted – CAT 673031\*



CAT 673031 – Stainless Steel

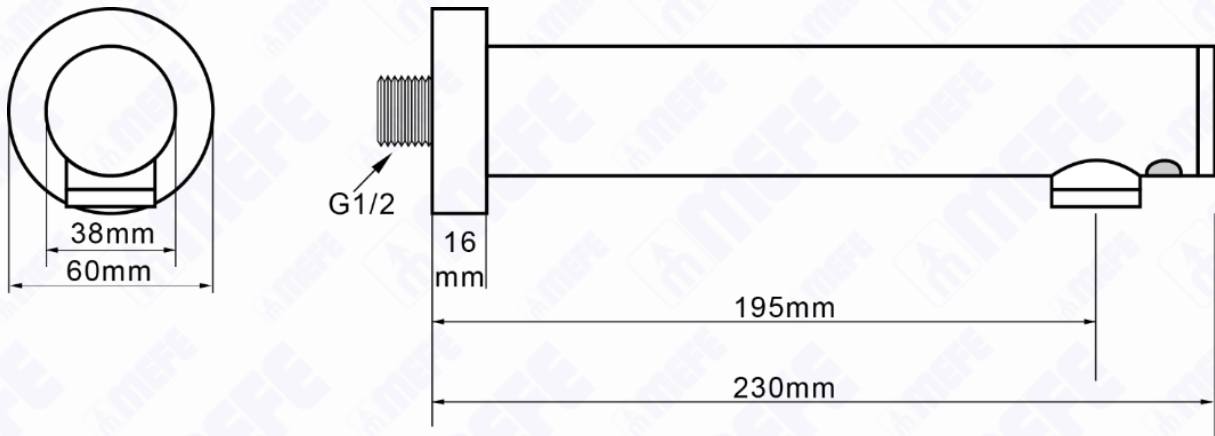


CAT 673031B – Matte Black



## Technical Data

1. Invisible light rays are continuously emitted from the faucet sensor.
2. When the user's hands comes into range of the sensor detection zone, the solenoid valve is activated.
3. After the user removes their hands, the solenoid valve closes.
4. The circuit will automatically reset for the next user.
5. If an object is in view for 30—60 seconds, the faucet will automatically shut off. The faucet will remain off until the object is removed.



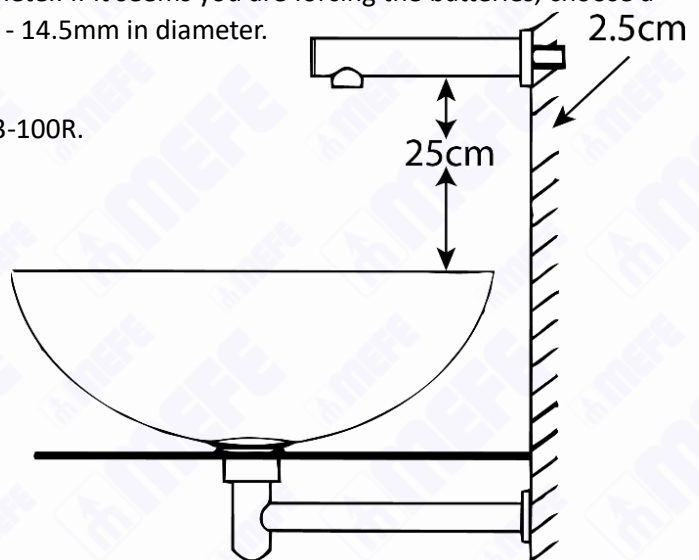
### Specifications

<b>Power</b>	DC 6V 4 x AA alkaline batteries* (batteries not supplied)	<b>Installation Diameter</b>	Single hole to suit G 1/2"
<b>Battery Life</b>	150,000 cycles	<b>Response Time</b>	0.3 seconds
<b>Sensing Distance</b>	<b>Products before SN: 11044</b> Default approximately 10cm <b>Products including and after SN: 11044</b> Default approximately 10cm Reprogrammed with remote achieves min 0 to 5 or max 0 to 20cm**	<b>Water Stop Protection (Auto Shut Off)</b>	Approx. 60 seconds
<b>Working Temp.</b>	1°C - 60°C	<b>Working Pressure</b>	0.07Mpa—0.7Mpa
<b>Inlet Size</b>	G 1/2"	<b>Faucet Body Material</b>	Stainless Steel

\*AA Alkaline batteries must be maximum 14mm in diameter. If it seems you are forcing the batteries, choose a different brand as AA batteries can range between 13.5 - 14.5mm in diameter.

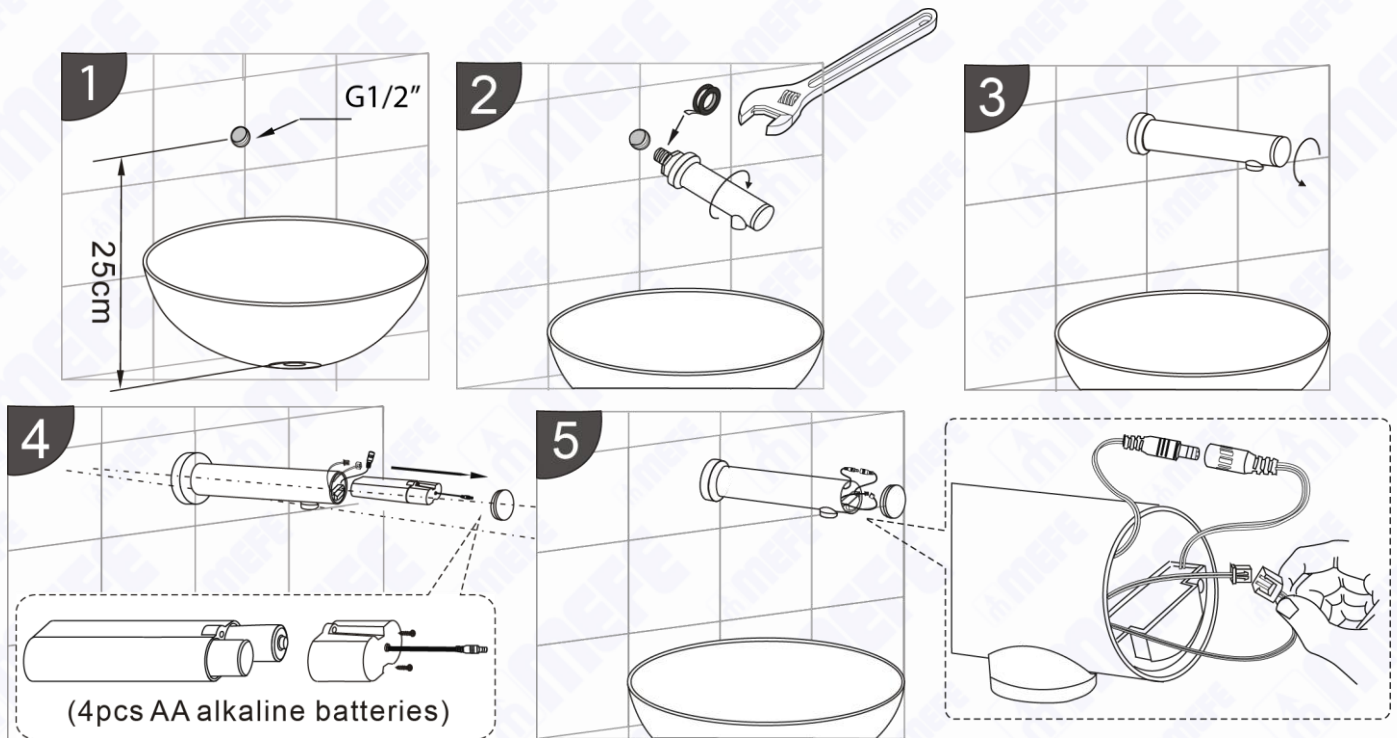
We recommend Energizer Max E91 AA batteries.

\*\*To reprogram sensing range, use optional remote 673-100R.



## Installation

1. Leave a hole of G1/2' in diameter, 25mm inner thread depth in the wall (Figure 1).
2. Rest the thread end of the faucet with thread sealing tap into the G1/2' thread hole. Use a spanner to fix it to avoid leakage of water (Figure 2).
3. Open the cap of the faucet by twisting anti-clockwise with your hand (Figure 3).
4. Take out the battery housing and install batteries. Once the batteries are installed, return the battery holder into position and put the sensor back into the faucet immediately. When the LED light does not flash, remove the sensor and plug in the solenoid valve to accurately adjust the sensing distance (Figure 4).
5. Connect the solenoid valve and the sensor. The faucet is now ready for use (Figure 5).



### Sensor Range Adjustment

The unit automatically adjusts for local conditions. Once the batteries are installed, hold the sensor / battery pack in the position it would normally be situated and connect the battery terminals. The unit will flash while it is programming to the available sensing range. After 60 seconds the unit is ready for normal operation.

# Operation Manual

## Automatic Sensor Tap

Tube Design – Wall Mounted – CAT 6730\*



CAT 67305 / CAT 67306 –  
Chrome Plated



CAT 67305B –  
Matte Black

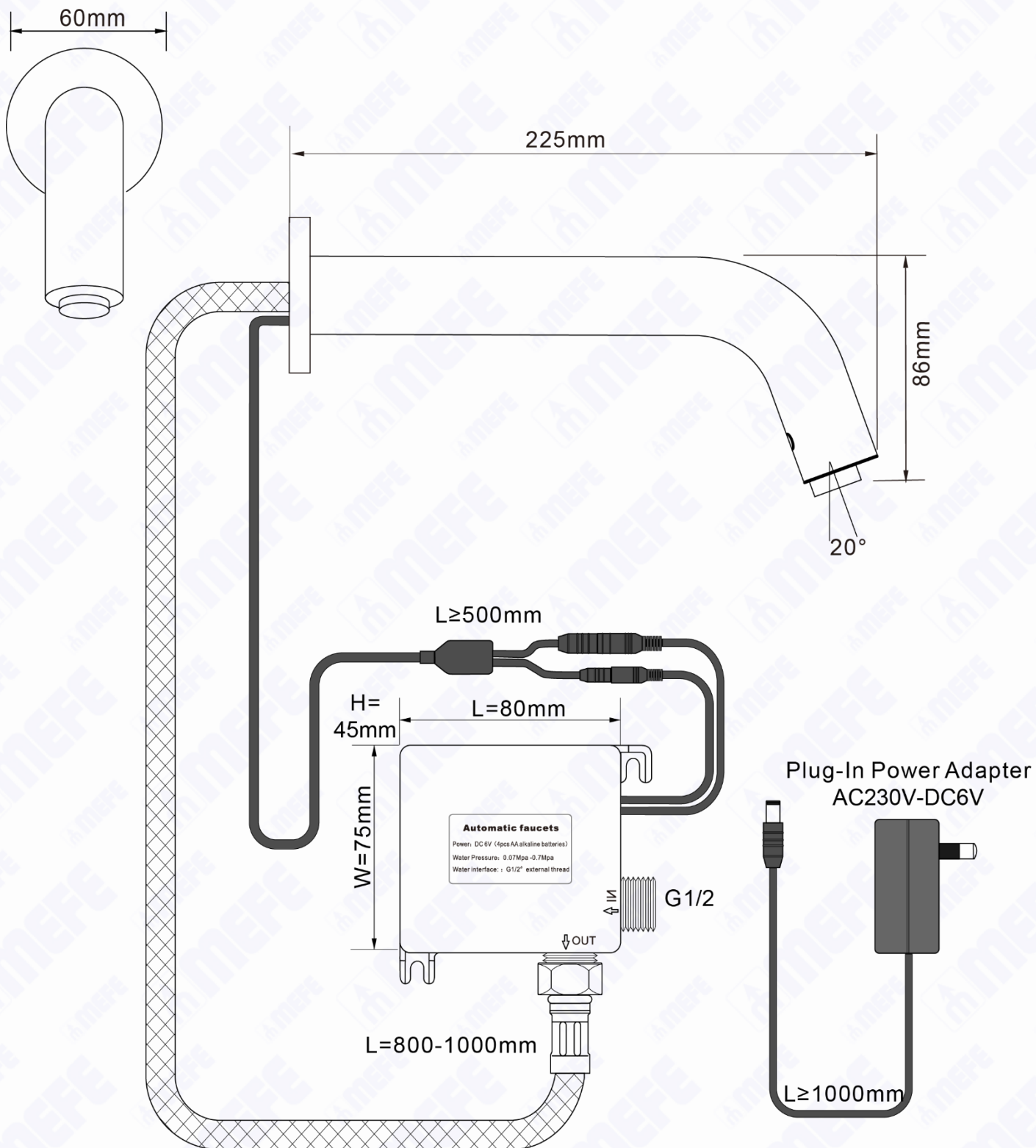


CAT 67305G –  
Gold Chrome Plated



## Technical Data

1. Invisible light rays are continuously emitted from the faucet sensor.
2. When the user's hands come into range of the sensor detection zone, the solenoid valve is activated.
3. After the user removes their hands, the valve closes.
4. The circuit will automatically reset for the next user.
5. If an object is in view for 30—60 seconds, the faucet will automatically shut off. The faucet will remain off until the object is removed.



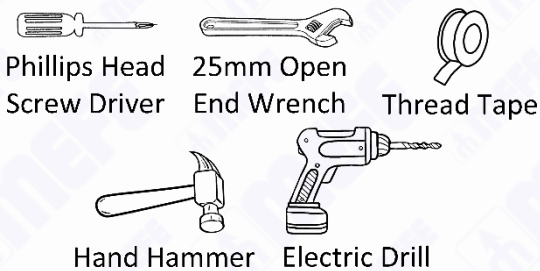
## Specifications

<b>Power</b>	AC 240V or DC 6V 4 x AA alkaline batteries* (batteries not supplied)	<b>Installation Diameter</b>	Single hole (32mm)
<b>Battery Life</b>	150,000 cycles	<b>Response Time</b>	Less than 0.7 seconds
<b>Sensing Distance</b>	<p><b>Products before SN: 11044</b> Default approximately 10cm</p> <p><b>Products including and after SN: 11044</b> Default approximately 10cm Reprogrammed with remote achieves min 0 to 5 or max 0 to 20cm**</p>	<b>Water Stop Protection (Auto Shut Off)</b>	Approx. 60 seconds
<b>Working Temp.</b>	1°C - 60°C	<b>Flow Rate</b>	Less than 3 L/s at 0.3Mpa
<b>Working Pressure</b>	0.07Mpa—0.7Mpa	<b>Ambient Humidity</b>	95% or less
<b>Inlet Size</b>	BSP 1/2" (DN15) male thread	<b>Faucet Body Material</b>	Standard #65 brass, chrome plated

\* AA Alkaline batteries must be maximum 14mm in diameter. If it seems you are forcing the batteries please choose a different brand as AA batteries can range between 13.5 and 14.5mm in diameter. We recommend Energizer Max E91 AA batteries.

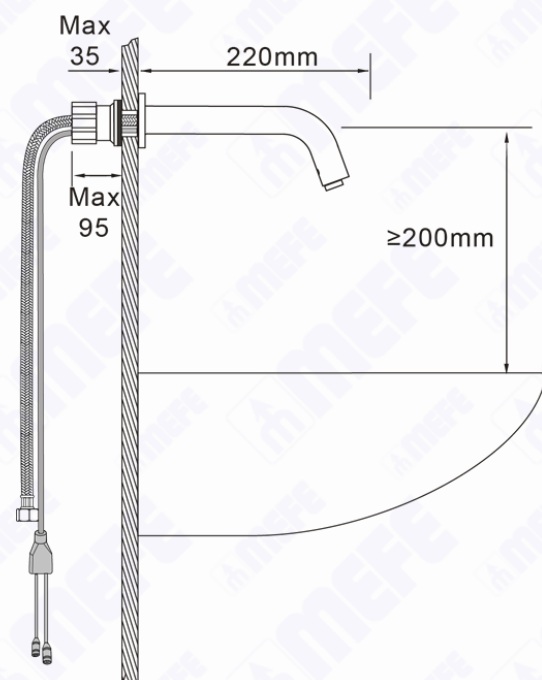
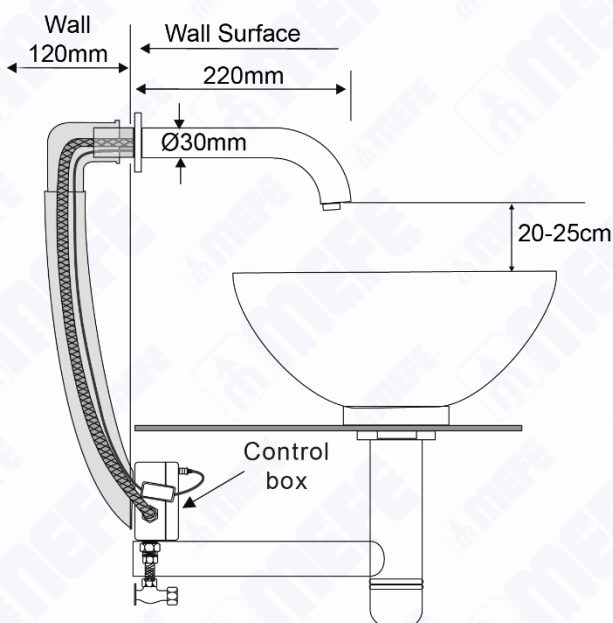
\*\* To reprogram sensing range use optional remote 673-100R.

## Required Tools



## Dry Wall Version (CAT 67306)

## Mortar Version (CAT 67305)



# Mortar Installation - CAT 67305

**1** Prepare PVS drain pipe in advance according to the size above. Put PVC elbows into the PVC Pipe.

PVC elbow  
 $\text{Ø}36\text{mm}$   
 $\text{Ø}40\text{mm}$   
 500mm  
 (40mm PVC Drain pipe Self-prepared)

**2**

45mm  
 60mm  
 PVC drains  
 Water supply pipe  
 200mm  
 400mm

Slot the wall according to the figure then place the PVC elbow into the slot

**3**

Wall  
 Tiles  
 Cement mortar  
 PVC drains  
 Water supply pipe

Fix the PVC pipe with cement mortar, Once this is complete, you can start tiling.

**4**

Install the mounting plate on the elbow.

**5**

Wall  
 Tiles  
 Cement mortar  
 PVC drains  
 Water supply pipe

First thread the signal wire into Pipe  
 Then insert the hose into Pipe

**6**

Wall  
 Tiles  
 Cement mortar  
 PVC drains  
 Water supply pipe

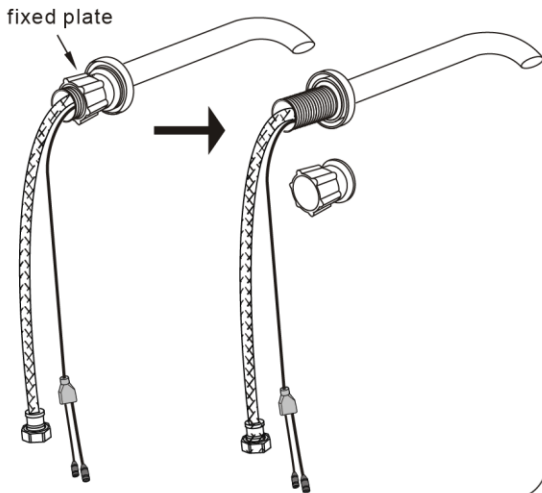
Tighten the decorative cover

Proceed to Step 4 of Drywall Installation on next page

# Dry Wall Installation - CAT 67306

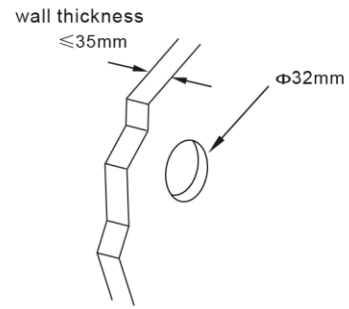
## Step 1

Take the fixing plate out of the faucet



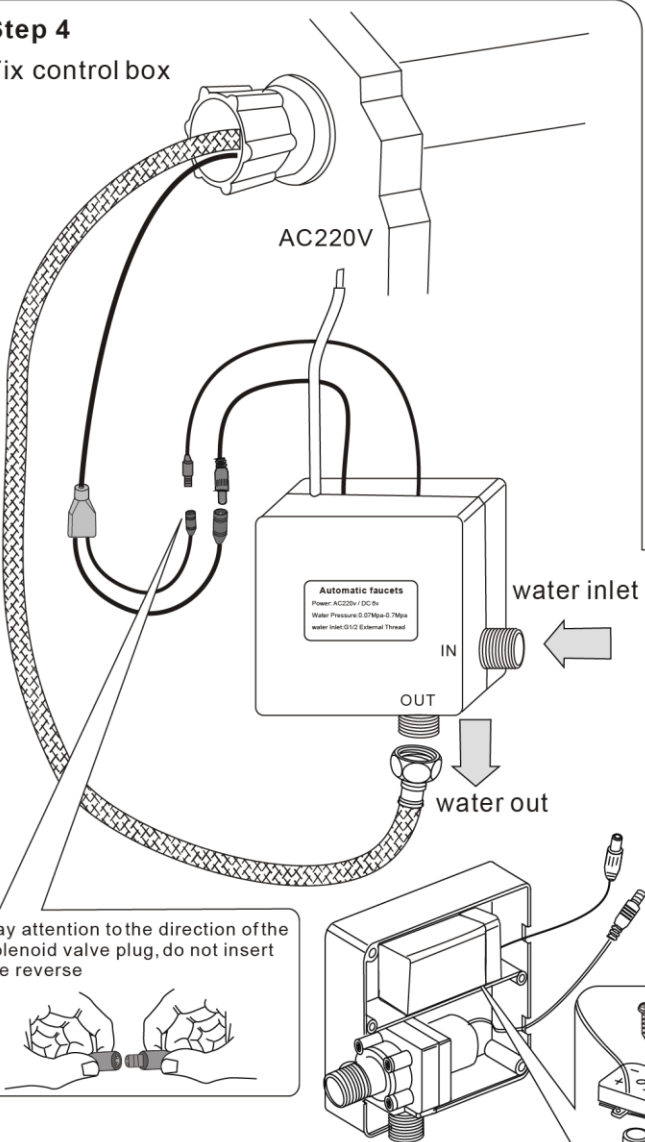
## Step 2

Install the fixing plate



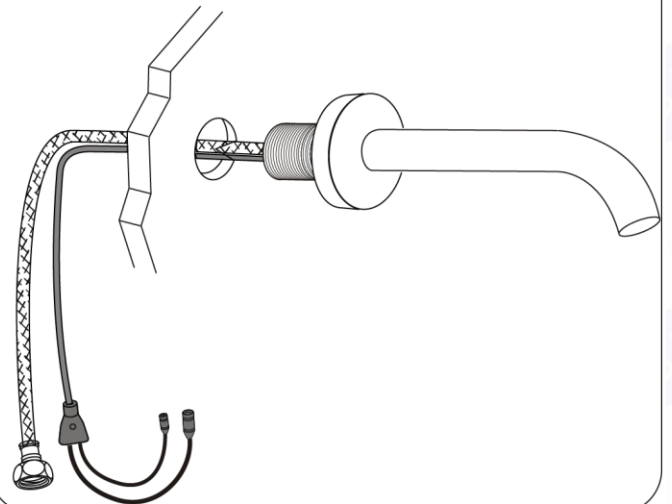
## Step 4

Fix control box

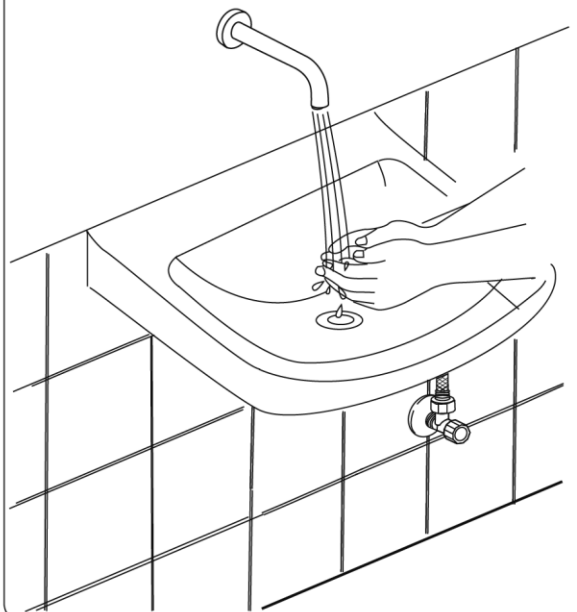


## Step 3

Route the hose and signal wires through the fixing plate and wall plate



Insert the sensor cable into the socket on the control box. And tighten the nut. When the power is turned on, the LED on the sensor controller flashes. It can be used after the light goes out.



### Install the battery:

When using the battery, please prepare 4 AA alkaline batteries, then open the box, remove the battery box, press the positive and negative polarity marked on the lid, insert the battery, then cover, and tighten.

# Operation Manual

## Automatic Sensor Tap

Bench Mounted – Boomerang – CAT 679178\*

CAT 679178 – Stainless Steel

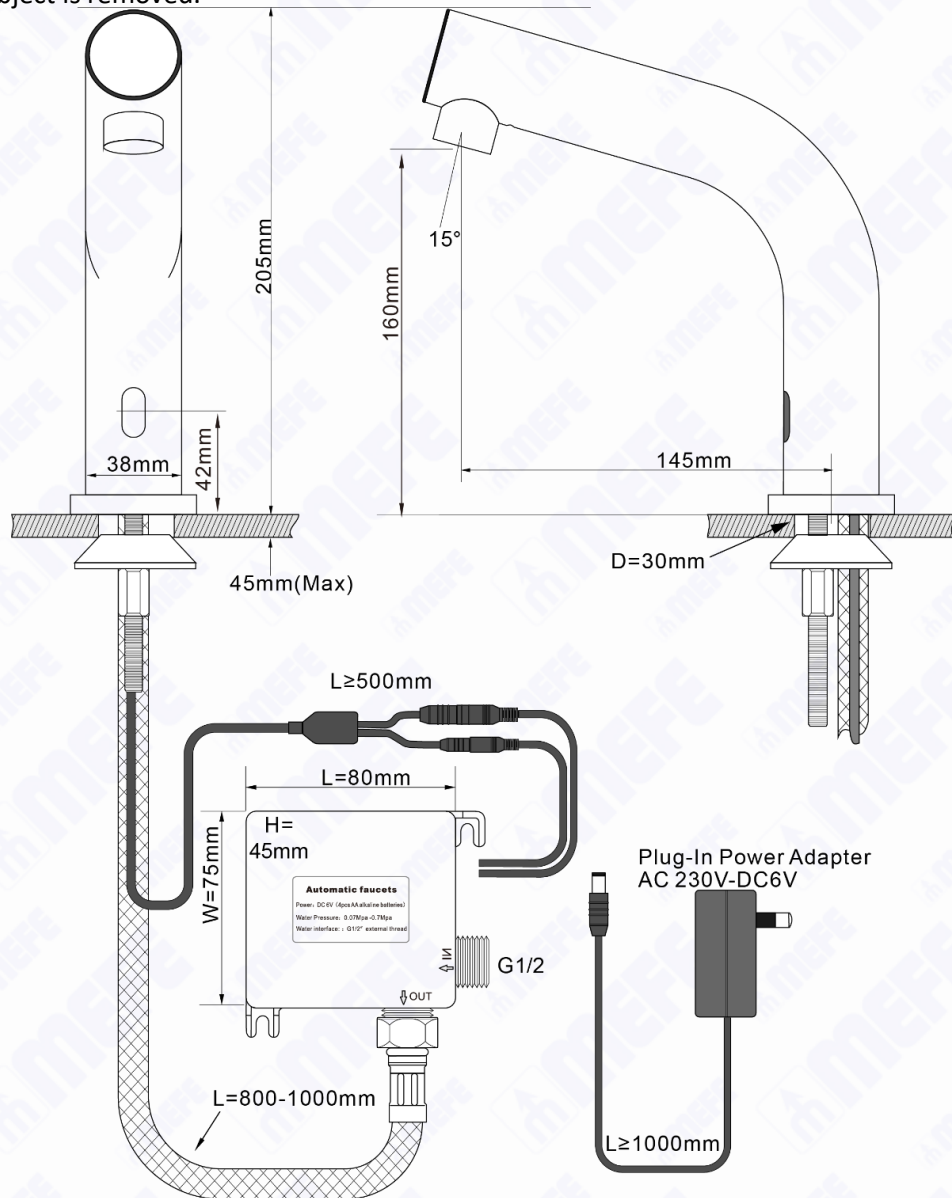
CAT 679178S – Brushed Satin

CAT 679178B – Matte Black



## Technical Information

1. Invisible light rays are continuously emitted from the faucet sensor.
2. When the user's hands come into range of the sensor detection zone, the solenoid valve is activated.
3. After the user removes their hands, the valve closes.
4. The circuit will automatically reset for the next user.
5. If an object is in view for 30–60 seconds, the faucet will automatically shut off. The faucet will remain off until the object is removed.



## Specifications

<b>Power</b>	AC 240V or DC 6V 4 x AA alkaline batteries* (batteries not supplied)	<b>Installation Diameter</b>	Single hole (32mm)
<b>Battery Life</b>	150,000 cycles	<b>Response Time</b>	Less than 0.7 seconds
<b>Sensing Distance</b>	Default approximately 5 to 22cm (auto adjusts) Reprogrammed with remote achieves min 0 to 5 or max 0 to 20cm**	<b>Water Stop Protection (Auto Shut Off)</b>	Approx. 60 seconds
<b>Working Temp.</b>	1°C - 60°C	<b>Flow Rate</b>	Less than 3 L/s at 0.3Mpa

Working Pressure 0.07Mpa—0.7Mpa

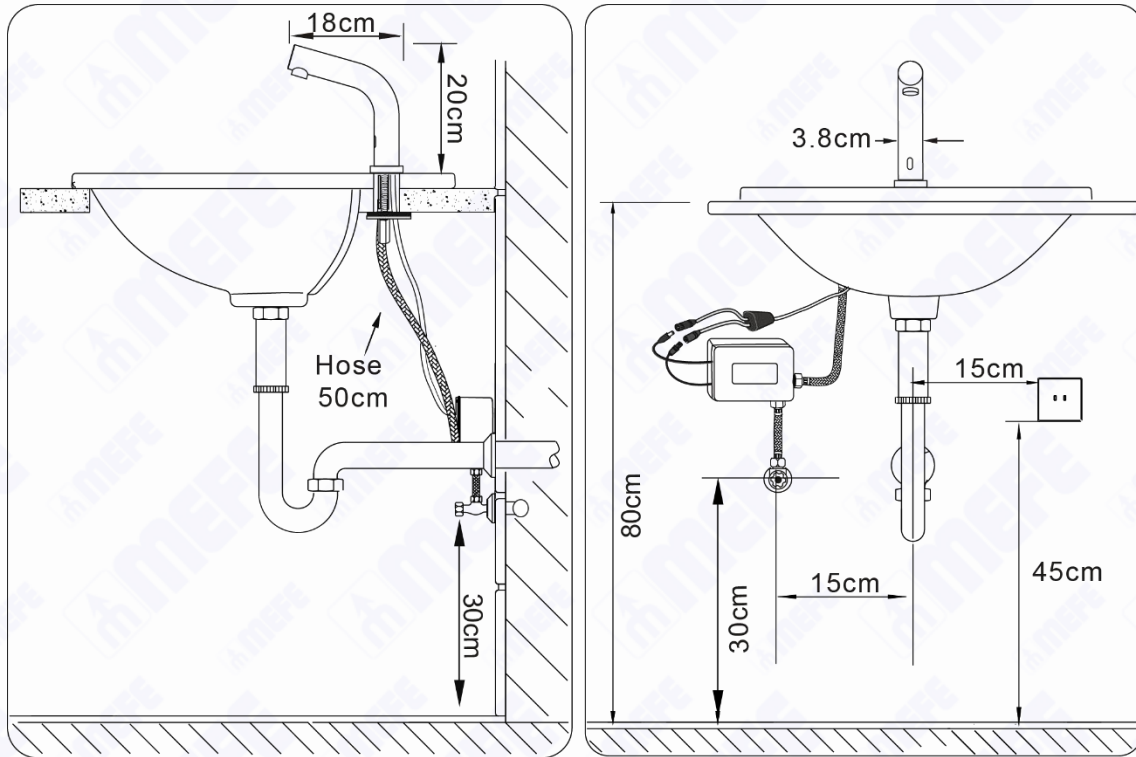
Ambient Humidity 95% or less

Inlet Size BSP 1/2" (DN15) male thread

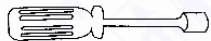
Faucet Body Material 304 Stainless Steel

\*AA Alkaline batteries must be maximum 14mm in diameter. If it seems you are forcing the batteries please choose a different brand as AA batteries can range between 13.5 and 14.5mm in diameter. We recommend Energizer Max E91 AA batteries.

\*\*To reprogram sensing range use optional remote 673-100R.



### Required Tools



12mm Socket Screw Driver



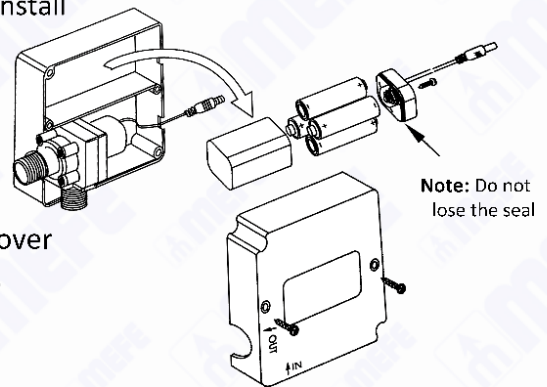
Phillips Head Screw Driver



Shifter Spanner

When using batteries, please prepare 4 x AA alkaline batteries, then open the control box, remove the battery box, ensuring you pay attention to polarity on lid, insert the batteries, cover ensuring seal is in place, and tighten.

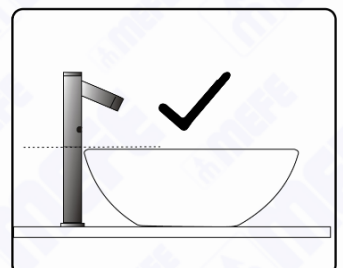
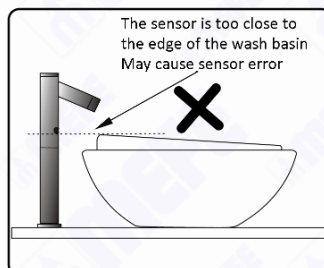
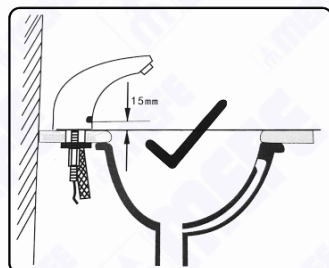
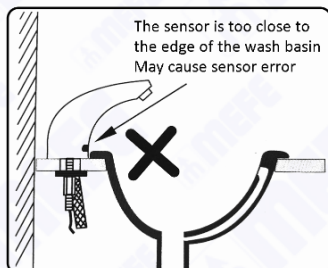
### Battery Install



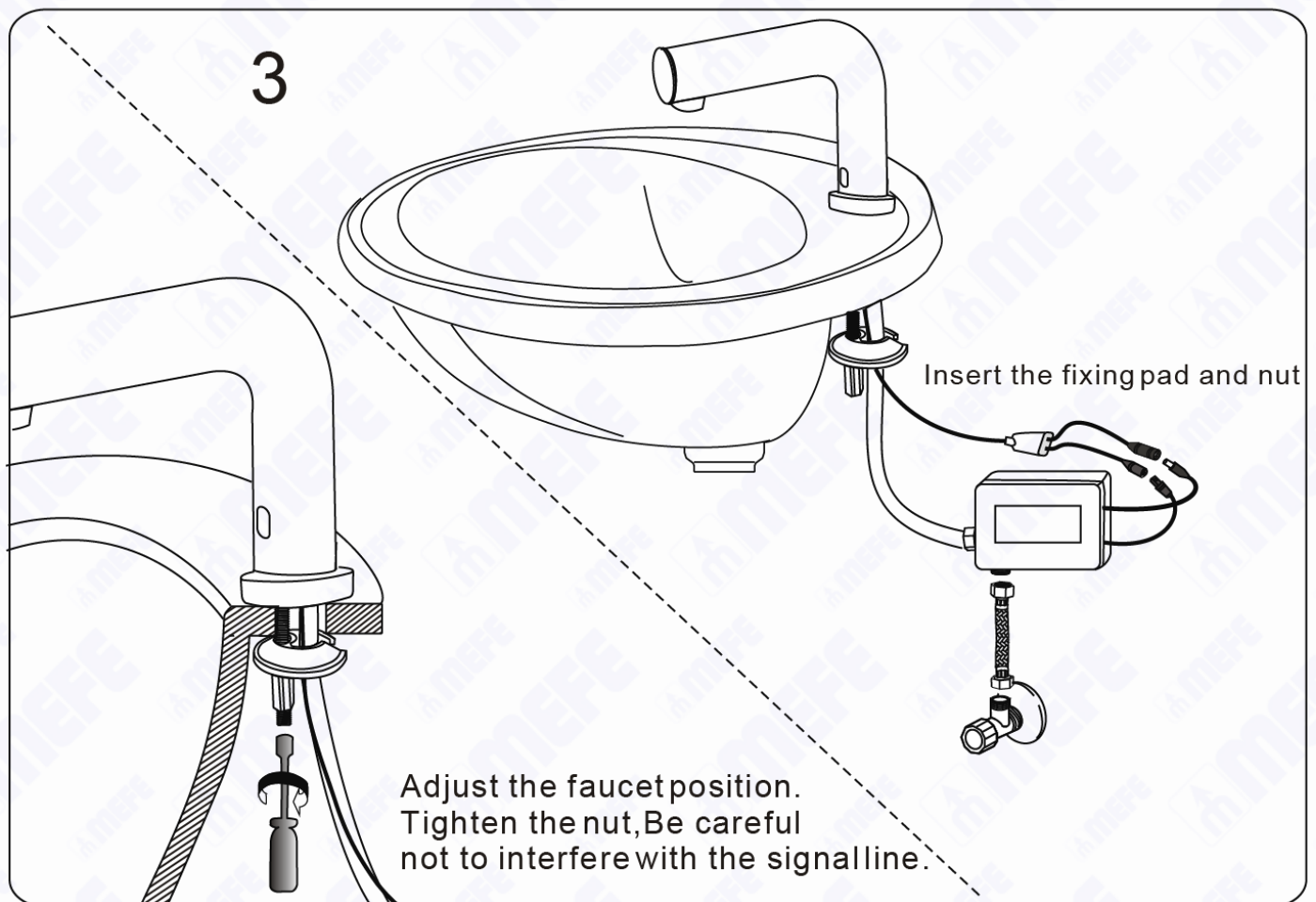
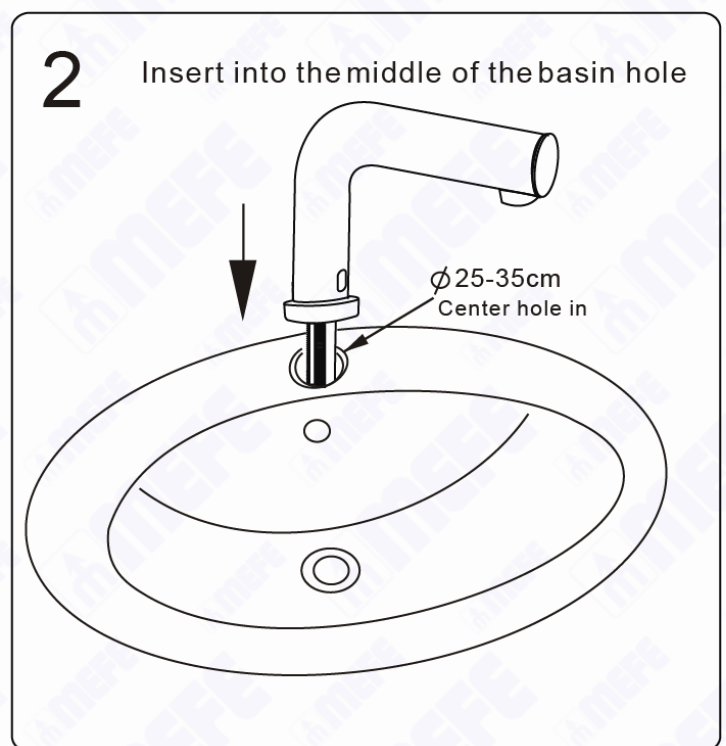
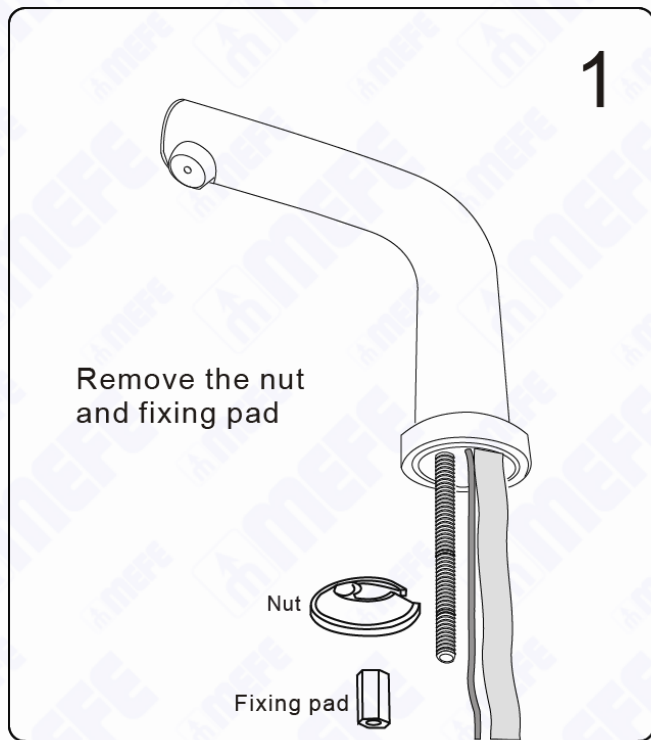
### Choosing the Correct Basin

**IMPORTANT:** Please avoid stainless steel and other highly reflective basins as these reflections can cause interference with the sensor.

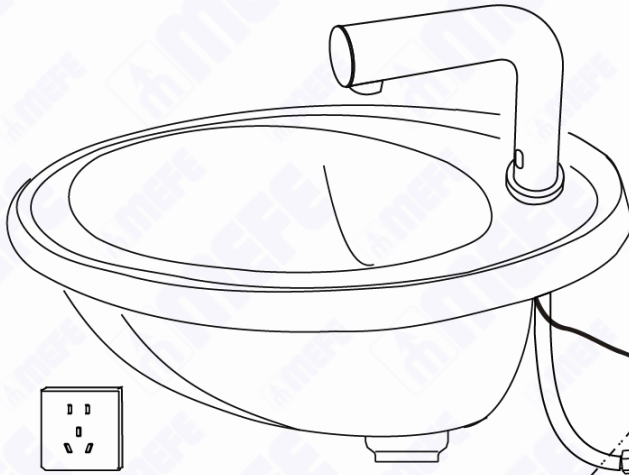
**Sensor of the faucet must be higher than the basin or lavatory. Minimum of 15mm**



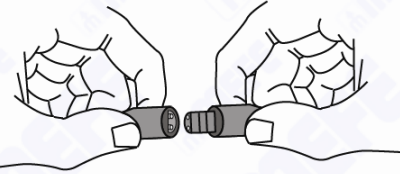
## Installation



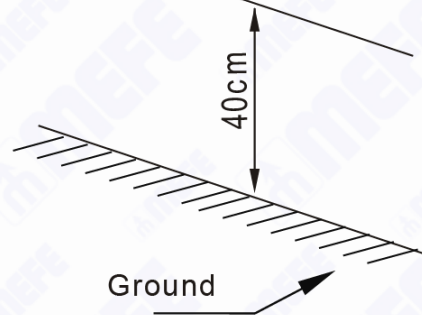
# 4



Pay attention to the direction of the solenoid valve plug, do not insert the reverse



1. Install an angle valve that can be used to adjust the amount of water flow.
2. Fix the control box to the wall.
3. Connect the end of the hose with the nut on the faucet body to the water outlet of the control box.
4. Use a 20 cm long hose with 1/2 nut on both sides. Connect the water outlet of the angle valve and the water inlet of the control box.
5. Insert the sensor cable into the socket on the control box. And tighten the nut
6. When the power is turned on, the LED on the sensor controller flashes 3 times.

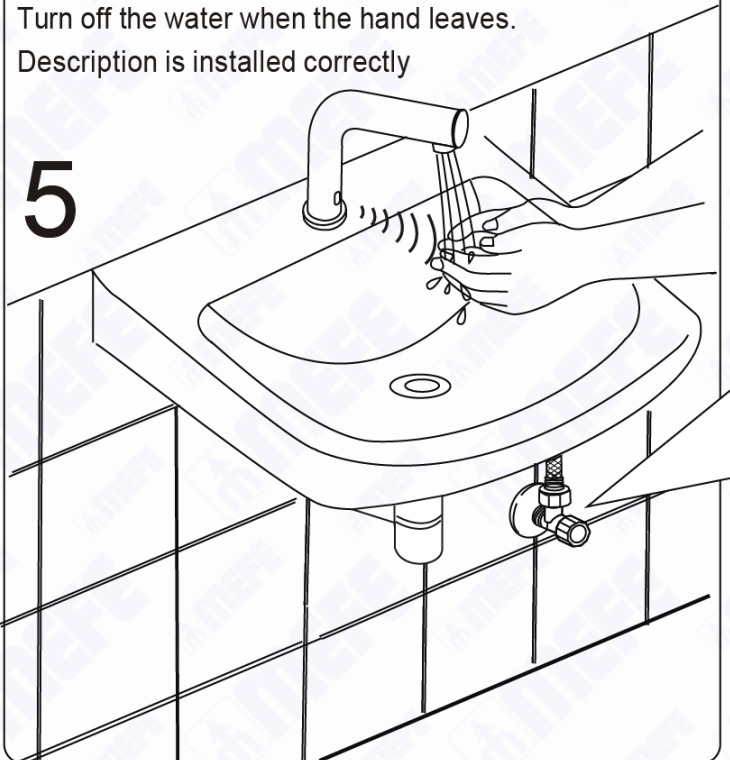


Place your hand under the water outlet and the solenoid valve will make a "click" sound and the LED in the sensor will flash. Then the faucet automatically effluent.

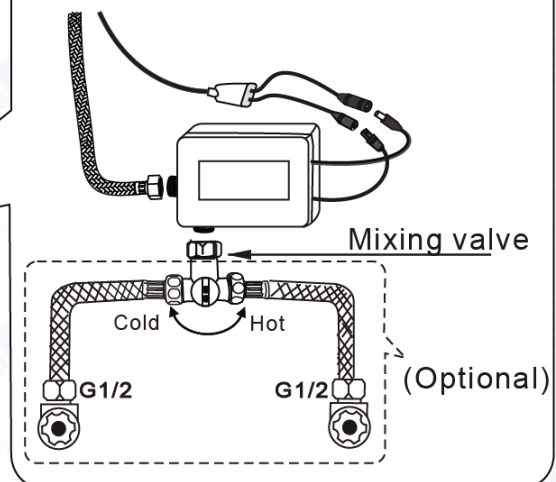
Turn off the water when the hand leaves.

Description is installed correctly

# 5



Hot and cold water tap installation diagram:



# Operation Manual

## Automatic Sensor Tap

### Bench Mounted Versions



CAT 67917 – Stainless Steel

CAT 67917B – Matte Black

CAT 67917GM – Gun Metal



CAT 67910 – Chrome Plated

CAT 67910B – Matte Black

CAT 6791032 – Chrome Plated

CAT 6791032B – Matte Black



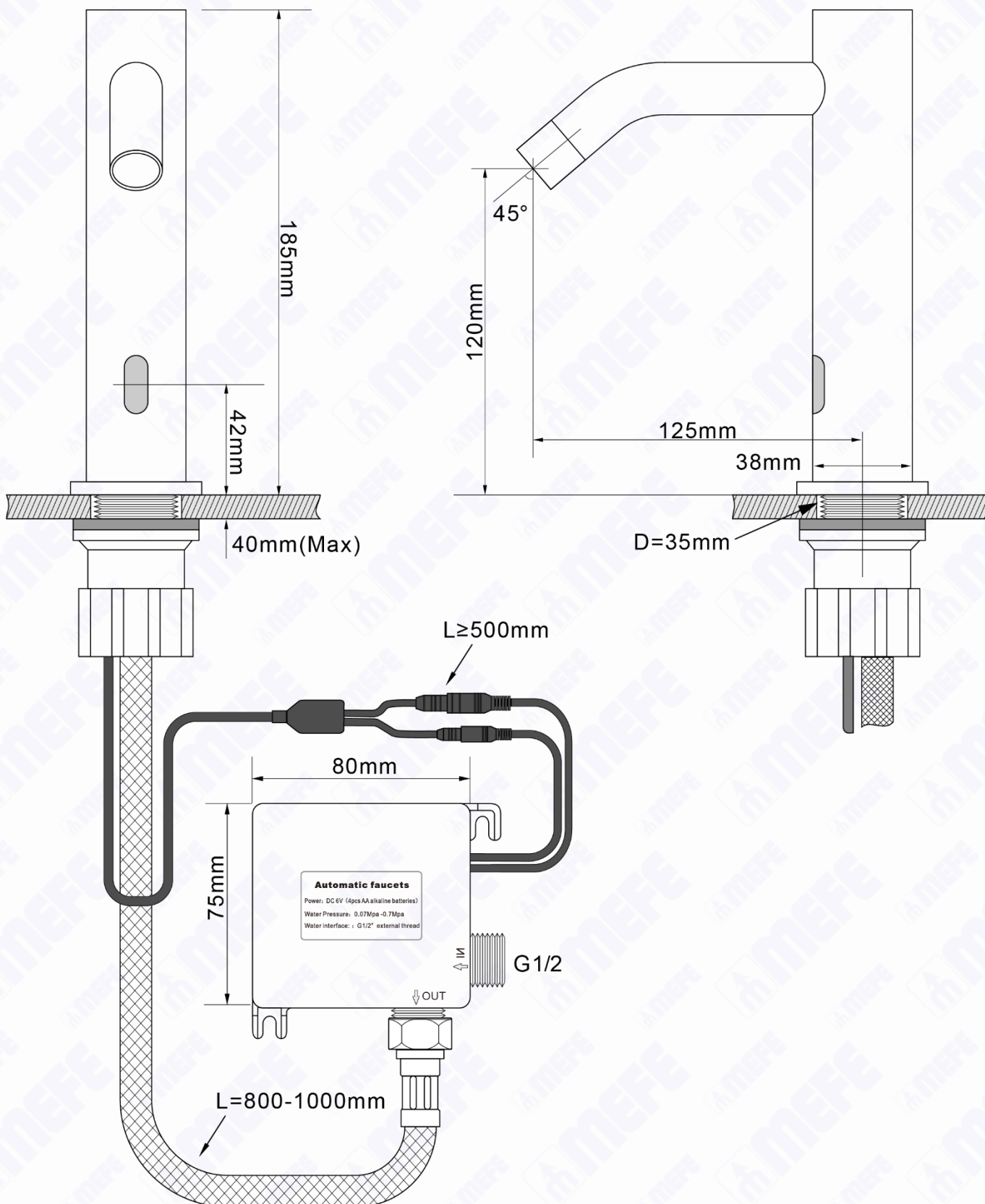
CAT 67911 – Chrome Plated

CAT 67911B – Matte Black



## CAT 67917\* Technical Information

1. Invisible light rays are continuously emitted from the faucet sensor.
2. When the user's hands come into range of the sensor detection zone, the solenoid valve is activated.
3. After the user removes their hands, the valve closes.
4. The circuit will automatically reset for the next user.
5. If an object is in view for 30—60 seconds, the faucet will automatically shut off. The faucet will remain off until the object is removed.

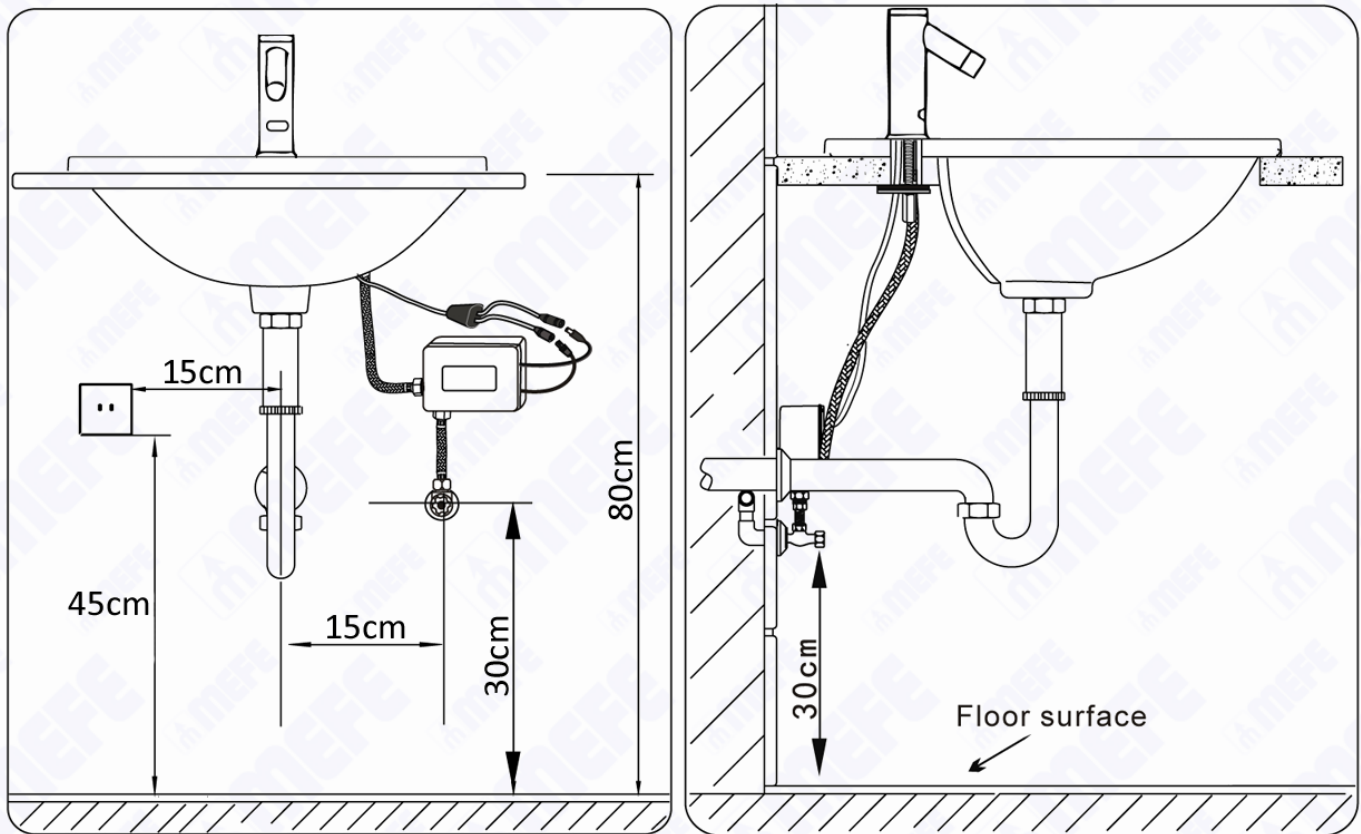


CAT 67917\* Specifications

<b>Power</b>	AC 240V or DC 6V 4 x AA alkaline batteries* (batteries not supplied)	<b>Installation Diameter</b>	Single hole (32mm)
<b>Battery Life</b>	150,000 cycles	<b>Response Time</b>	Less than 0.7 seconds
<b>Sensing Distance</b>	<p><b>Products before SN: 11044</b> Default approximately 10cm</p> <p><b>Products including and after SN: 11044</b> Default approximately 10cm Reprogrammed with remote achieves min 0 to 5 or max 0 to 20cm**</p>	<b>Water Stop Protection (Auto Shut Off)</b>	Approx. 60 seconds
<b>Working Temp.</b>	1°C - 60°C	<b>Flow Rate</b>	Less than 3 L/s at 0.3Mpa
<b>Working Pressure</b>	0.07Mpa—0.7Mpa	<b>Ambient Humidity</b>	95% or less
<b>Inlet Size</b>	BSP 1/2" (DN15) male thread	<b>Faucet Body Material</b>	Standard #65 brass, chrome plated

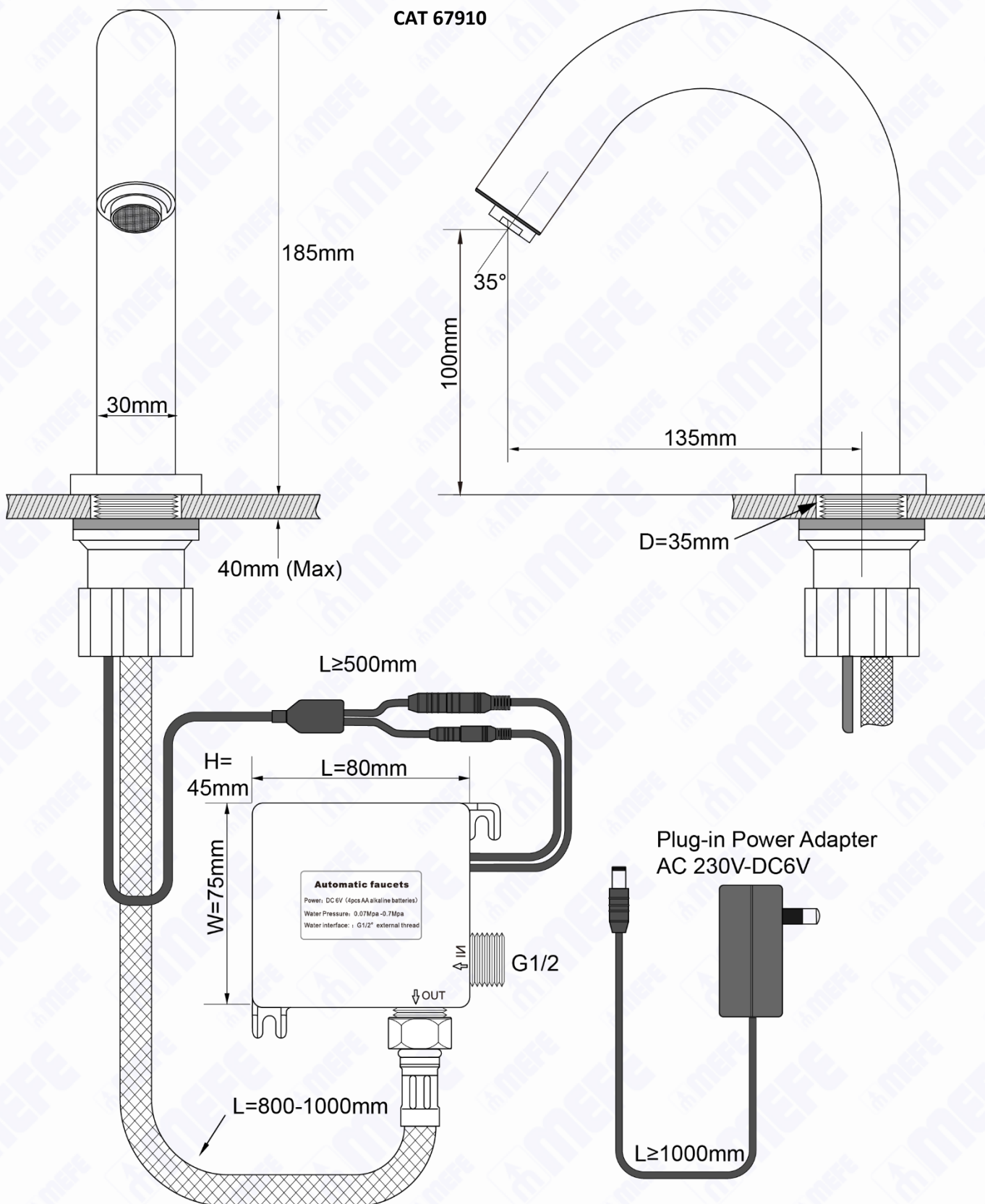
\*AA Alkaline batteries must be maximum 14mm in diameter. If it seems you are forcing the batteries, please choose a different brand as AA batteries can range between 13.5 and 14.5mm in diameter. We recommend Energizer Max E91 AA batteries.

\*\*Optional: To reprogram sensing range using remote (673-100R).

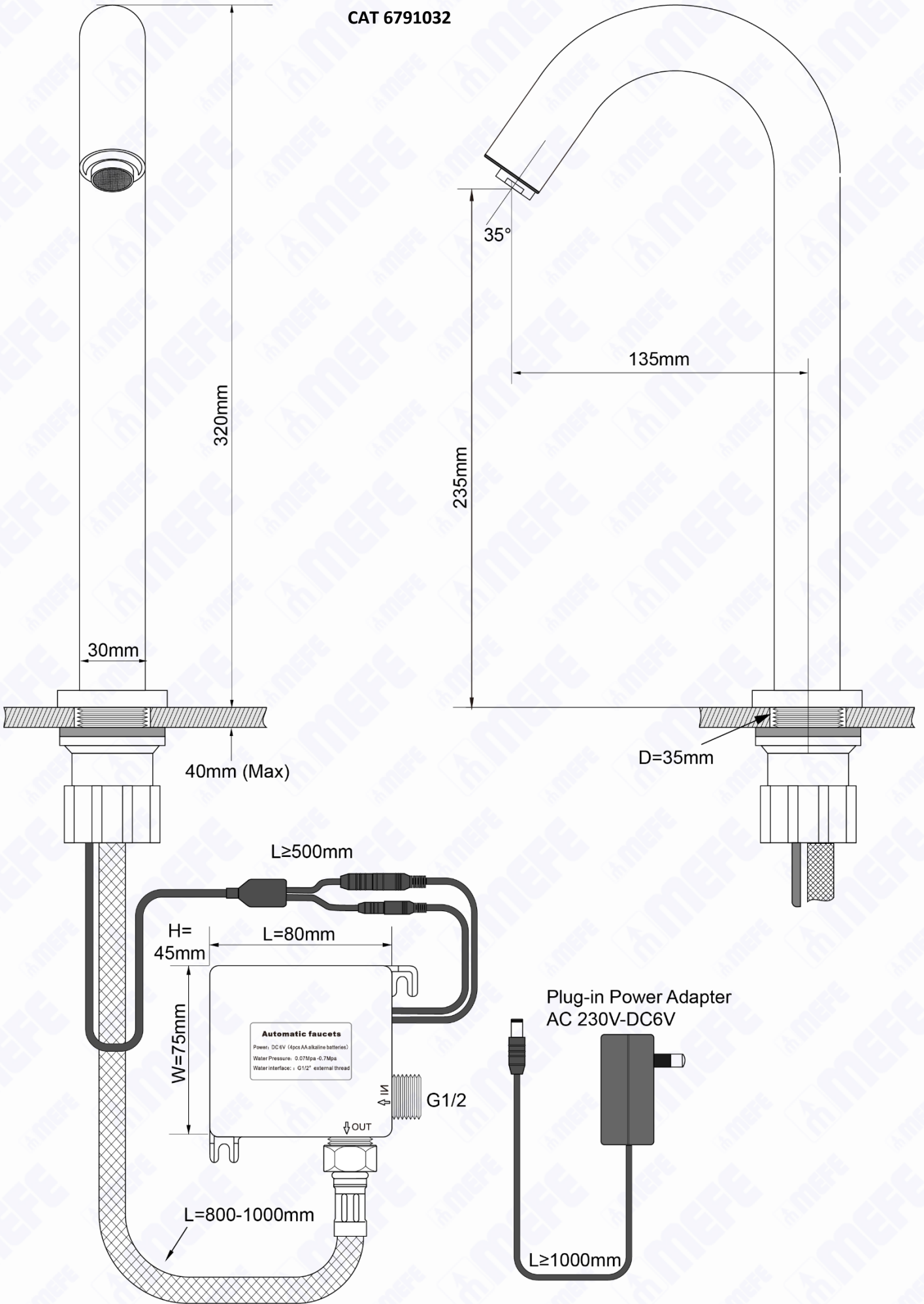


## CAT 67910\* / CAT 6791032\* Technical Information

1. Invisible light rays are continuously emitted from the faucet sensor.
2. When the user's hands come into range of the sensor detection zone, the solenoid valve is activated.
3. After the user removes their hands, the valve closes.
4. The circuit will automatically reset for the next user.
5. If an object is in view for 30—60 seconds, the faucet will automatically shut off. The faucet will remain off until the object is removed.



CAT 6791032

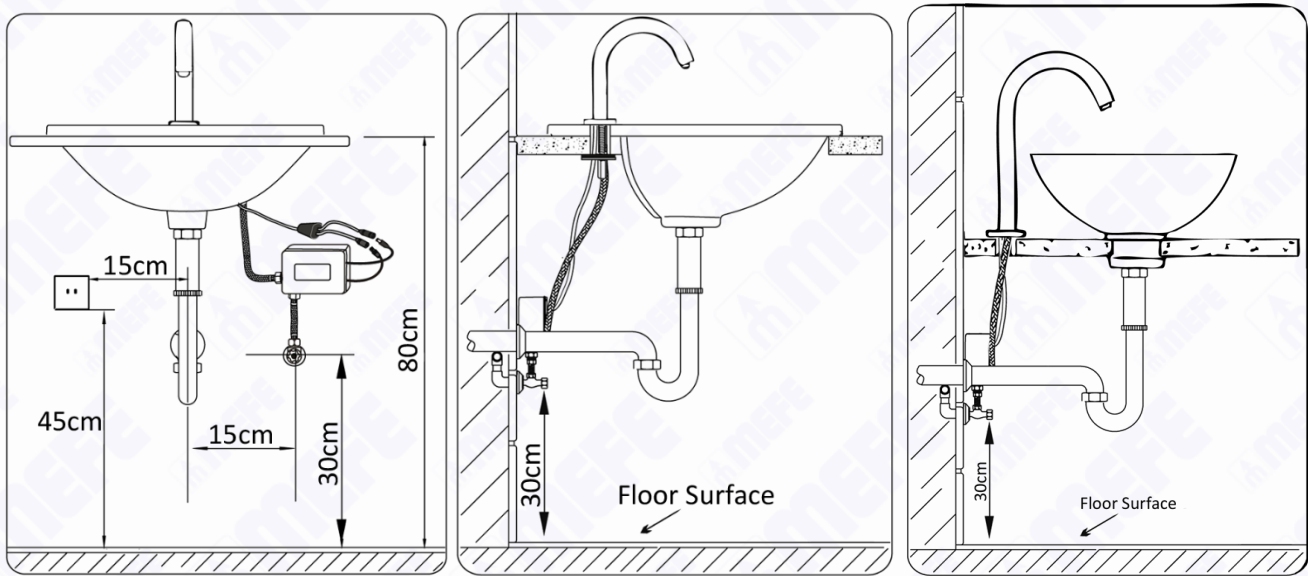


CAT 67910\* / CAT 6791032\* Specifications

<b>Power</b>	AC 240V or DC 6V 4 x AA alkaline batteries* (batteries not supplied)	<b>Installation Diameter</b>	Single hole (32mm)
<b>Battery Life</b>	150,000 cycles	<b>Response Time</b>	Less than 0.7 seconds
<b>Sensing Distance</b>	<p><b>Products before SN: 11044</b> Default approximately 10cm</p> <p><b>Products including and after SN: 11044</b> Default approximately 10cm Reprogrammed with remote achieves min 0 to 5 or max 0 to 20cm**</p>	<b>Water Stop Protection (Auto Shut Off)</b>	Approx. 60 seconds
<b>Working Temp.</b>	1°C - 60°C	<b>Flow Rate</b>	Less than 3 L/s at 0.3Mpa
<b>Working Pressure</b>	0.07Mpa—0.7Mpa	<b>Ambient Humidity</b>	95% or less
<b>Inlet Size</b>	BSP 1/2" (DN15) male thread	<b>Faucet Body Material</b>	Standard #59 brass, chrome plated

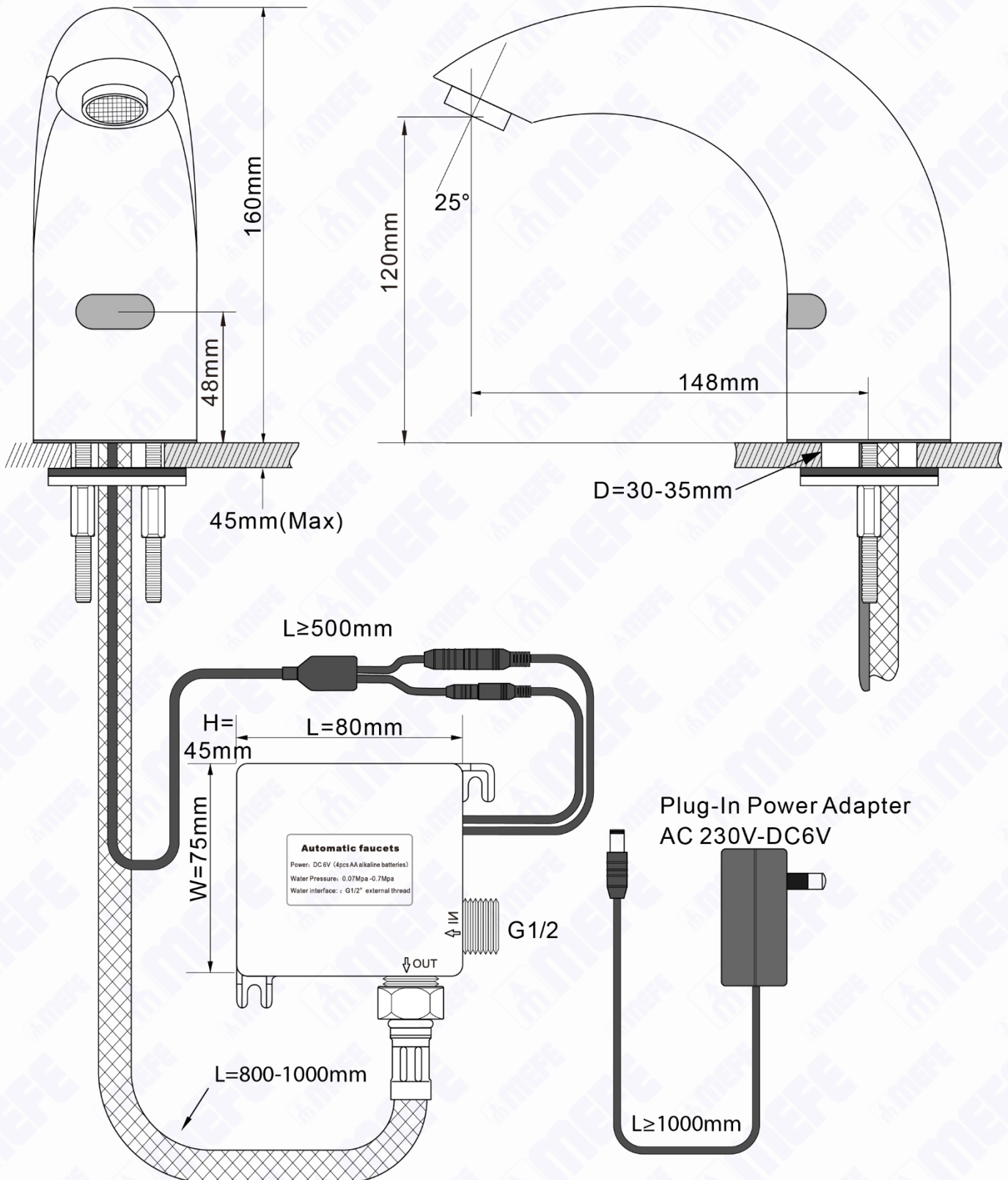
\*AA Alkaline batteries must be maximum 14mm in diameter. If it seems you are forcing the batteries please choose a different brand as AA batteries can range between 13.5 and 14.5mm in diameter. We recommend Energizer Max E91 AA batteries.

\*\*To reprogram sensing range use optional remote 673-100R.



## CAT 67911\* Technical Information

1. Invisible light rays are continuously emitted from the faucet sensor.
2. When the user's hands come into range of the sensor detection zone, the solenoid valve is activated.
3. After the user removes their hands, the valve closes.
4. The circuit will automatically reset for the next user.
5. If an object is in view for 30—60 seconds, the faucet will automatically shut off. The faucet will remain off until the object is removed.

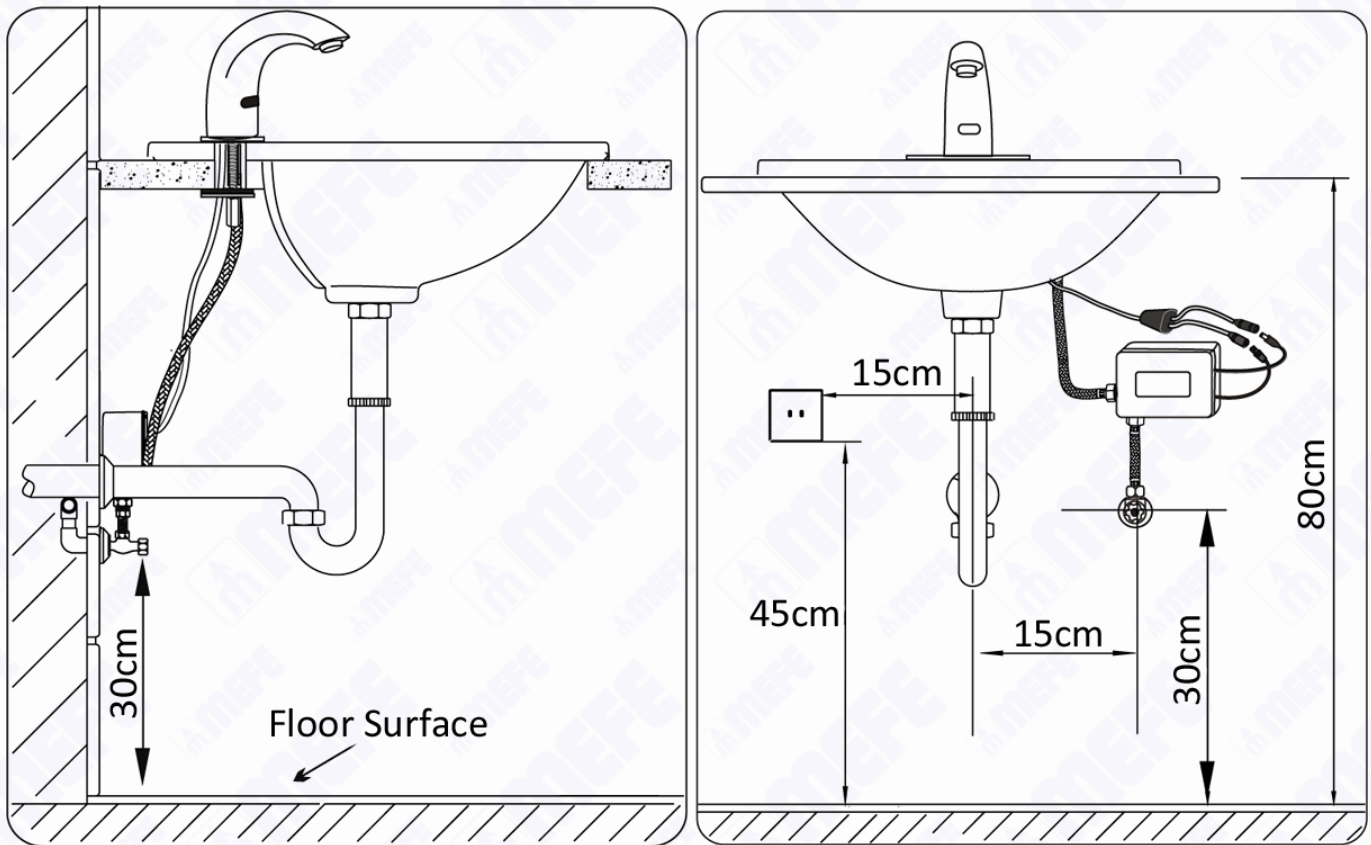


CAT 67911\* Specifications

<b>Power</b>	AC 240V or DC 6V 4 x AA alkaline batteries* (batteries not supplied)	<b>Installation Diameter</b>	Single hole (32mm)
<b>Battery Life</b>	150,000 cycles	<b>Response Time</b>	Less than 0.7 seconds
<b>Sensing Distance</b>	<p><b>Products before SN: 11044</b> Default approximately 10cm</p> <p><b>Products including and after SN: 11044</b> Default approximately 10cm Reprogrammed with remote achieves min 0 to 5 or max 0 to 20cm**</p>	<b>Water Stop Protection (Auto Shut Off)</b>	Approx. 60 seconds
<b>Working Temp.</b>	1°C - 60°C	<b>Flow Rate</b>	Less than 3 L/s at 0.3Mpa
<b>Working Pressure</b>	0.07Mpa—0.7Mpa	<b>Ambient Humidity</b>	95% or less
<b>Inlet Size</b>	BSP 1/2" (DN15) male thread	<b>Faucet Body Material</b>	Standard #59 brass, chrome plated

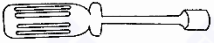
\*AA Alkaline batteries must be maximum 14mm in diameter. If it seems you are forcing the batteries please choose a different brand as AA batteries can range between 13.5 and 14.5mm in diameter. We recommend Energizer Max E91 AA batteries.

\*\*To reprogram sensing range use optional remote 673-100R.

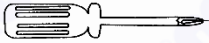


# Bench Mount Installation

## Required Tools



12mm Socket Screw Driver



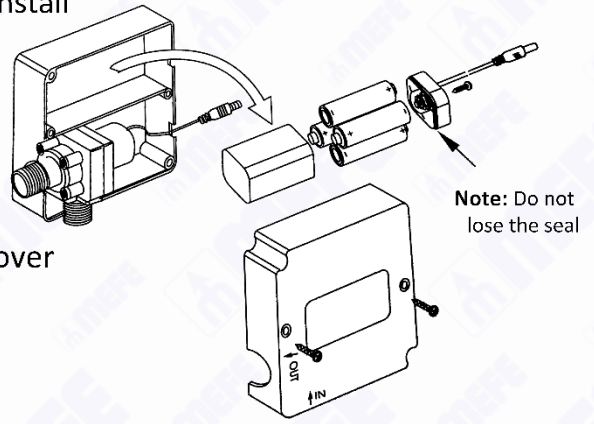
Phillips Head Screw Driver



Shifter Spanner

## Battery Install

When using batteries, please prepare 4 x AA alkaline batteries, then open the control box, remove the battery box, ensuring you pay attention to polarity on lid, insert the batteries, cover ensuring seal is in place, and tighten.

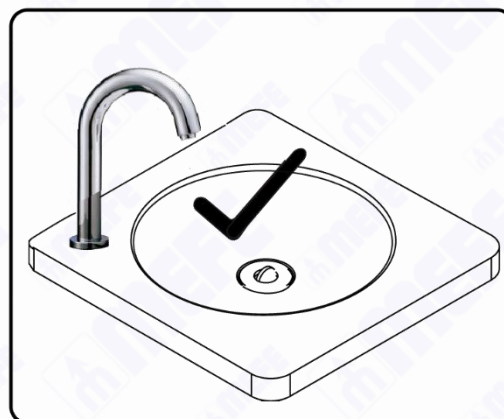
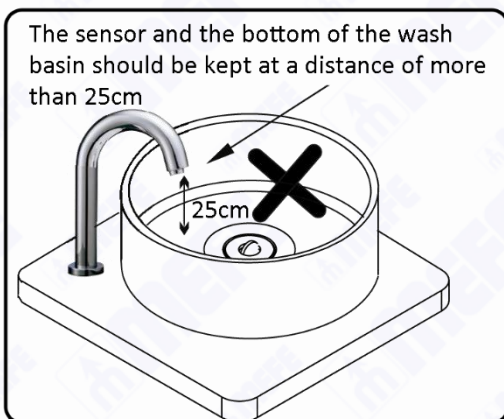
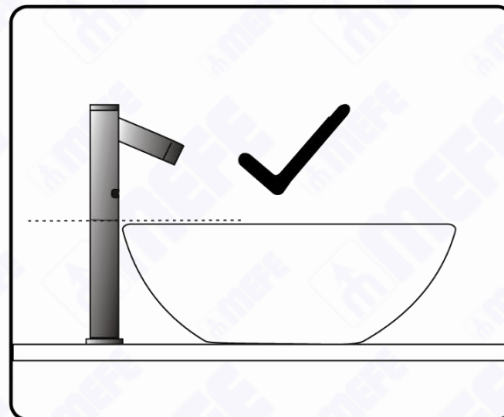
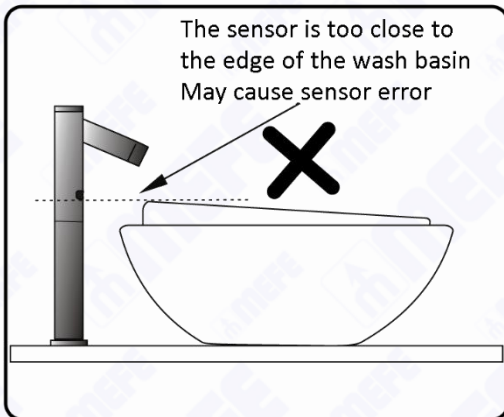
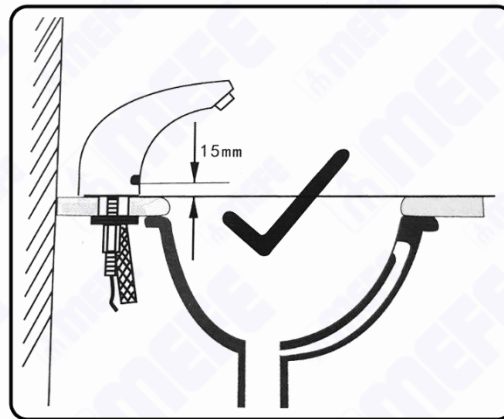
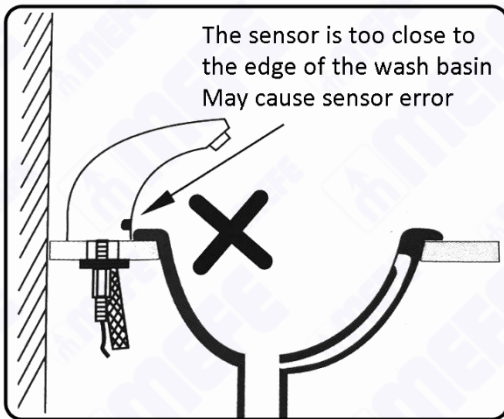


### Choosing the Correct Basin

**IMPORTANT:** Please avoid stainless steel and other highly reflective basins as these reflections can cause interference with the sensor.

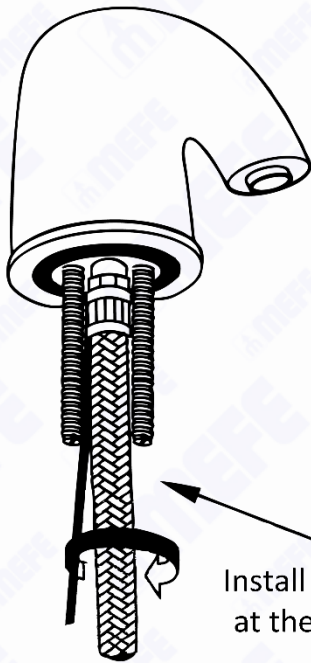


**Sensor of the faucet must be higher than the basin or lavatory. Minimum of 15mm**

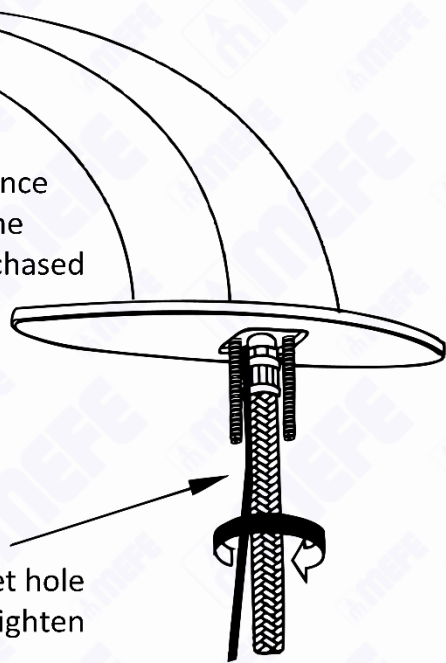


# 1

Please note: Installation guide is for deck mounted automatic faucets.

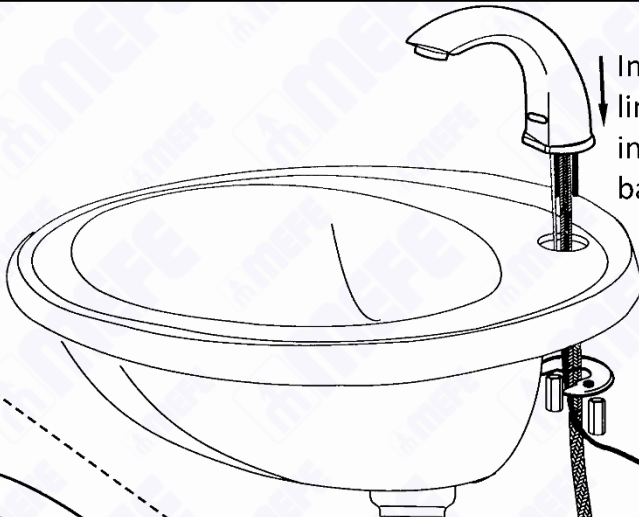


The information below is only for installation reference and does not represent the physical product you purchased



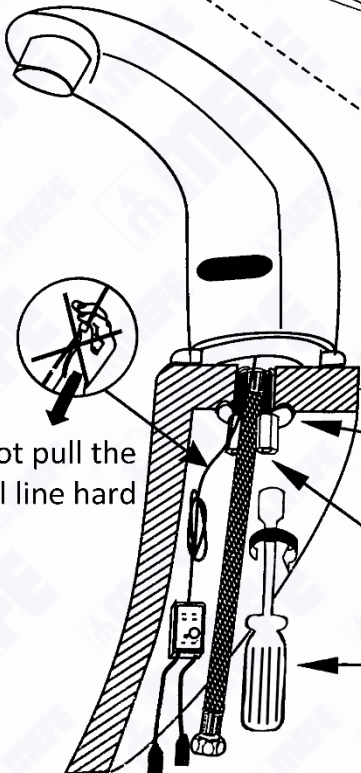
Install the hose into the water inlet hole at the bottom of the faucet and tighten

# 2



Insert the signal transmission line and Stainless Steel hose into the reserved holes in the basin

# 3

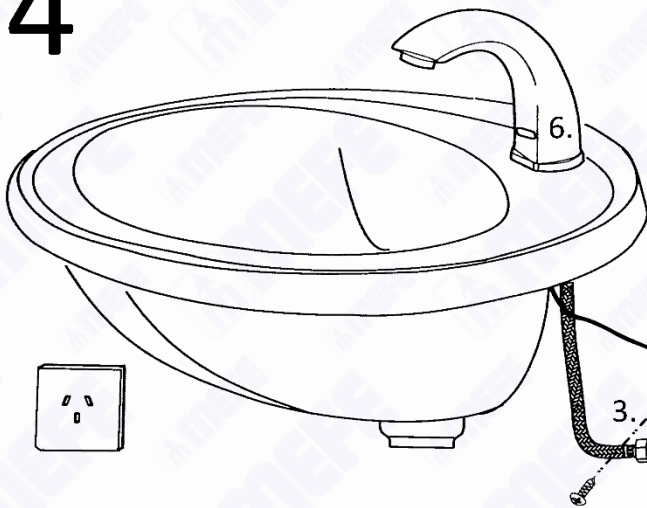


Do not pull the signal line hard

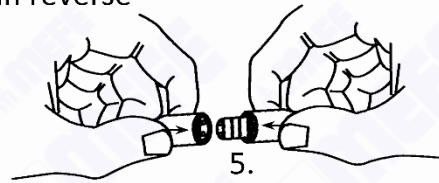
Sink  
Bottom Pad  
Hex nuts  
12mm hex driver

Adjust the faucet position. Secure the faucet to the countertop or basin with a retaining nut

# 4



Pay attention to the direction of the solenoid valve plug, **do not** insert in reverse



1. Ensure there is a shut off valve installed at the wall connection.

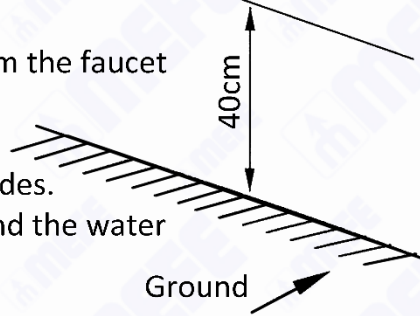
2. Fix the housing box to the wall.

3. Connect the other end of the hose coming from the faucet body to the water outlet of the control box.

4. Use a 20cm long hose with 1/2" nut on both sides. Connect the water outlet of the shut off valve, and the water inlet of the control box.

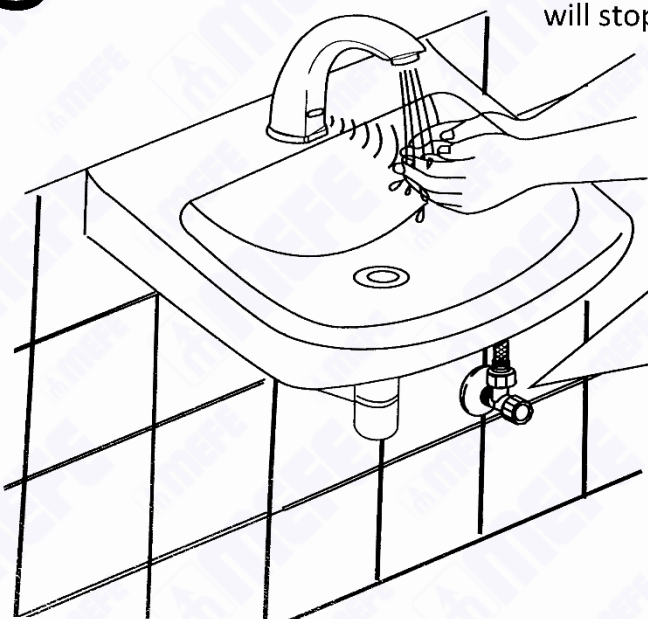
5. Insert the sensor cable into the socket on the control box.

6. When the power is turned on, the LED on the sensor controller will flash 3 times.

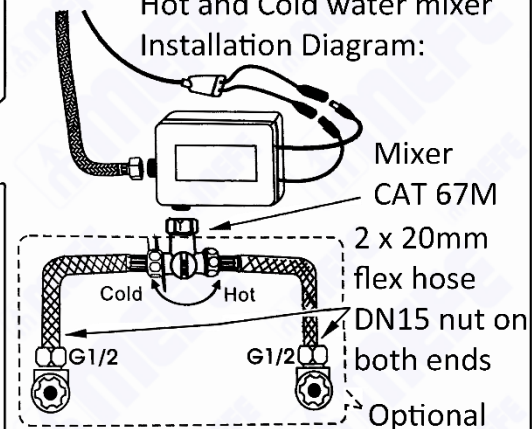


# 5

Place your hand under the water outlet and the solenoid valve will make a click. The LED in the sensor will flash. Water is activated. Remove hand and water will stop. Place supplied red or blue dot on head of faucet to identify hot or cold water

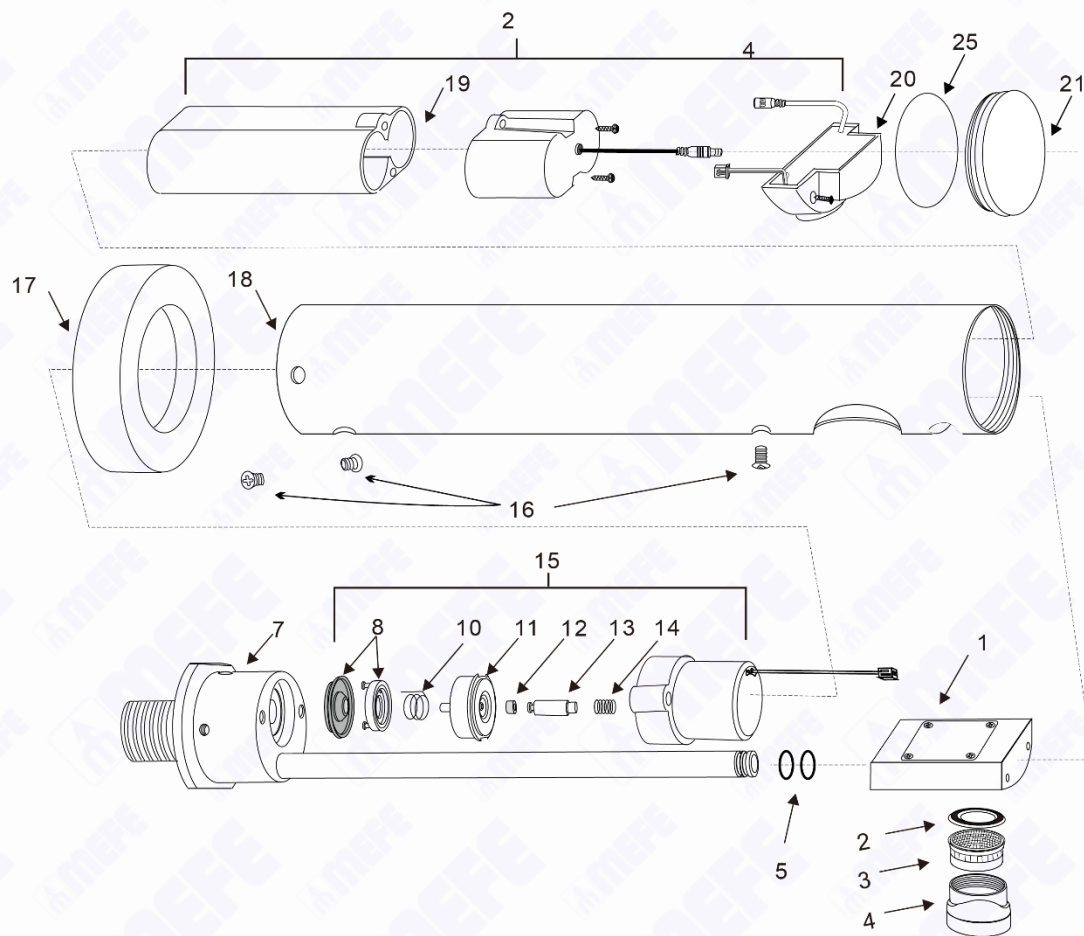


Hot and Cold water mixer Installation Diagram:



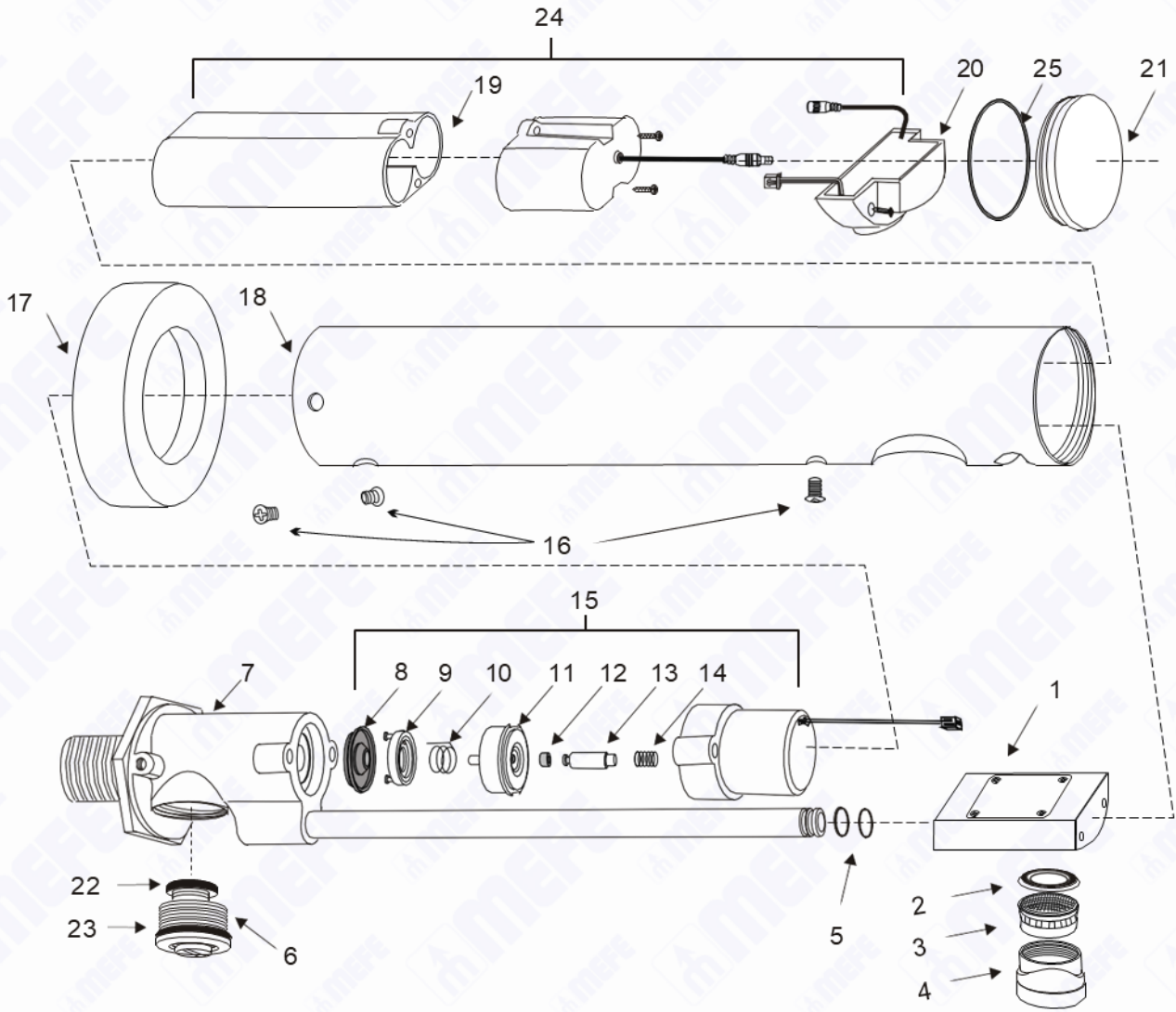
# Parts list

## Exploded View CAT 673031S



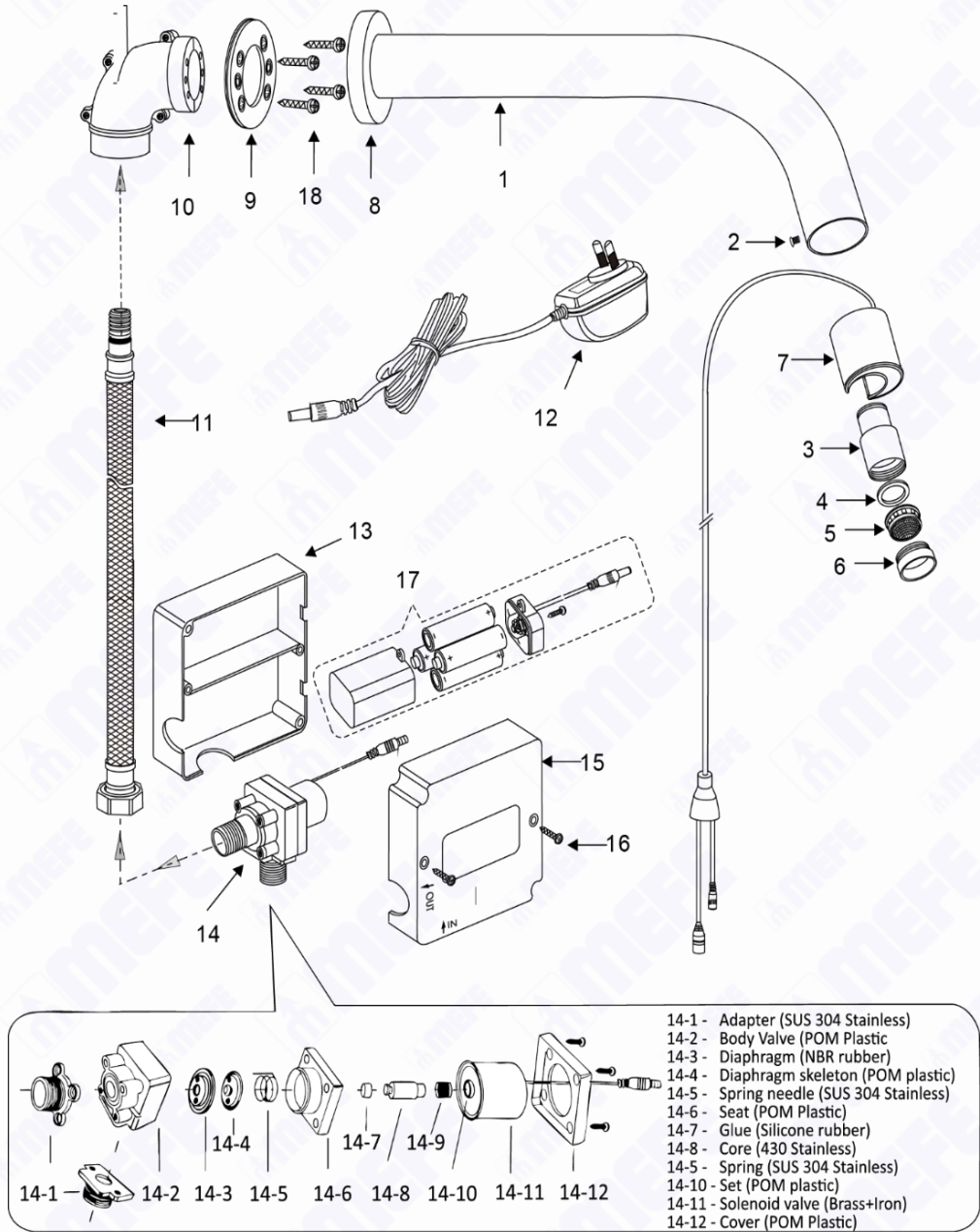
No.	Part #	Description	Material	No.	Part #	Description	Material
1.	673-033C	Spout Adapter	Stainless Steel 304	16.	673-045	Screw	Stainless Steel 304
2.	673-033B	Rubber Mat	NBR Rubber	17.	673-042	Cover	Stainless Steel 304
3.	673-033	Aerator	POM Plastic	18.	673-030	Faucet Body	Stainless Steel 304
4.	673-034	Spout Shell	Stainless Steel 304	19.	673-043B	Battery Box	Electronic Hardware
5.	673-035	O-Ring	NBR Rubber	20.	673-043A	Sensor	Electronic Hardware
7.	673-037 8S	Housing	Stainless Steel 304	21.	673-044	Faucet Cover	Stainless Steel 304
8.	673-041	Diaphragm	POM Plastic, Rubber	24.	673-043	Battery Box / Sensor	Electronic Hardware
10.	679-041B	Spring needle	Stainless Steel 304	25.	673-044a	O-Ring	NBR Rubber
11.	679-041C	Diaphragm seat	POM Plastic, Rubber				
12.	679-041D	Glue	Silicone Rubber				
13.	673-040	Iron Core	Stainless Steel 430				
14.	673-039	Spring	Stainless Steel 304				
15.	673-038	Solenoid Valve	Plastic, Rubber, Metal				

# Exploded View CAT 673031



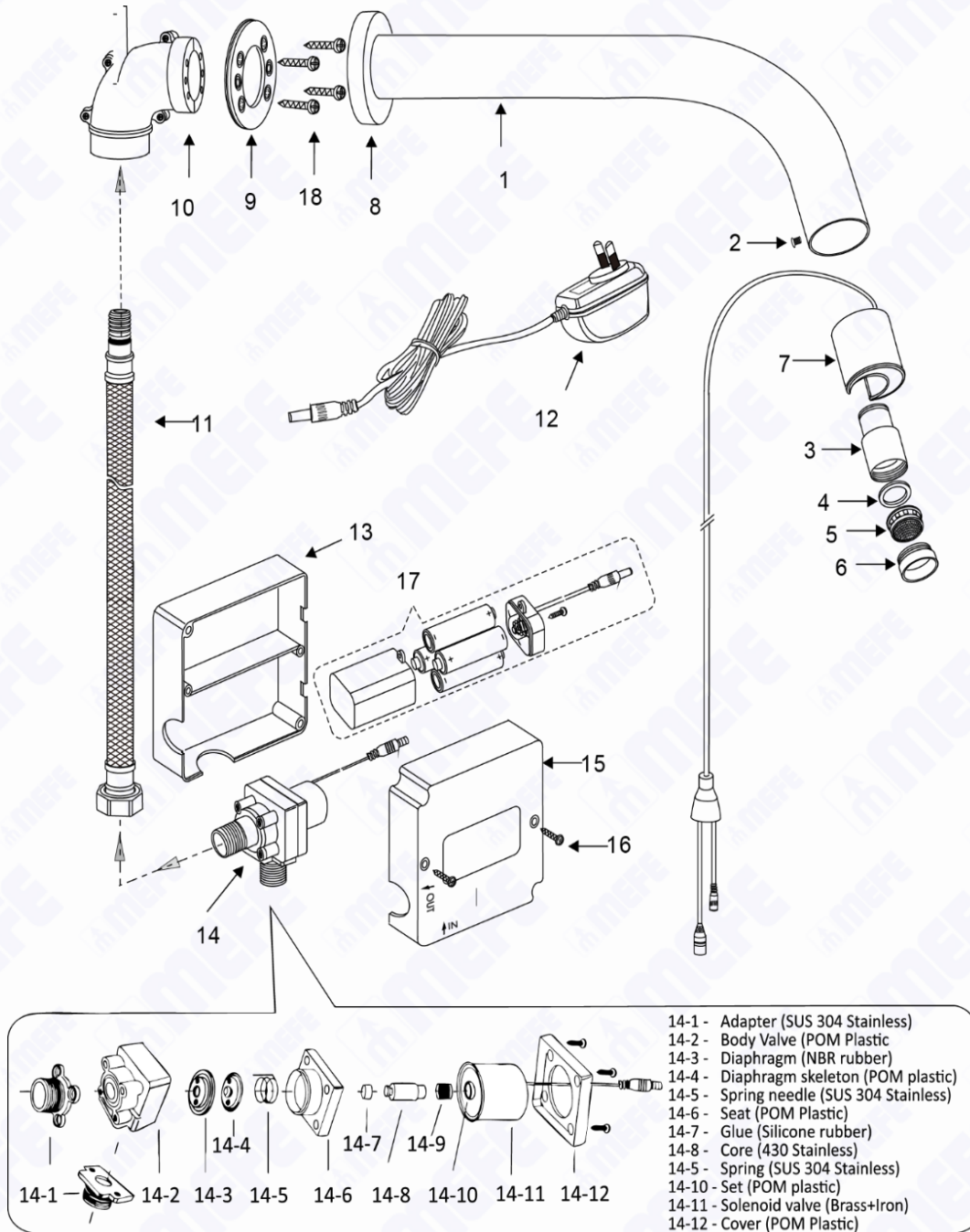
No.	Part #	Description	Material	No.	Part #	Description	Material
1.	673-033C	Spout Adapter	Stainless Steel 304	14.	673-039	Spring	Stainless Steel 304
2.	673-033B	Rubber Mat	NBR Rubber	15.	673-038	Solenoid Valve	Plastic, Rubber, Metal
3.	673-033	Aerator	POM Plastic	16.	673-045	Screw	Stainless Steel 304
4.	673-034	Spout Shell	Stainless Steel 304	17.	673-042	Cover	Stainless Steel 304
5.	673-035	O-Ring	NBR Rubber	18.	673-030	Faucet Body	Stainless Steel 304
6.	673-036	Flow Adjustment	Brass	19.	673-043B	Battery Box	Hardware Electronic
7.	673-037 8	Housing	Brass	20.	673-043A	Sensor	Electronic Hardware
8.	673-041	Diaphragm	POM Plastic, Rubber	21.	673-044	Faucet Cover	Stainless Steel 304
9.		Diaphragm Skeleton	POM Plastic	22.	673-036a	Seal	NBR Rubber
10.	679-041B	Spring needle	Stainless Steel 304	23.	673-036b	Seal	NBR rubber
11.	679-041C	Diaphragm seat	POM Plastic, Rubber	24.	673-043	Battery Box / Sensor	Electronic Hardware
12.	679-041D	Glue	Silicone Rubber	25.	673-044a	O-Ring	NBR Rubber
13.	673-040	Iron Core	Stainless Steel 430				

Exploded View CAT 67305S



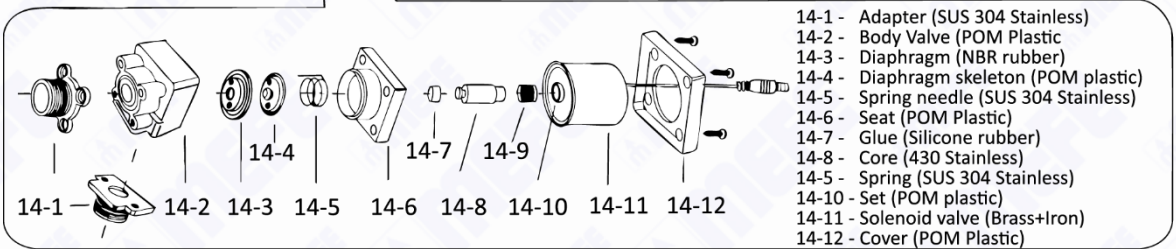
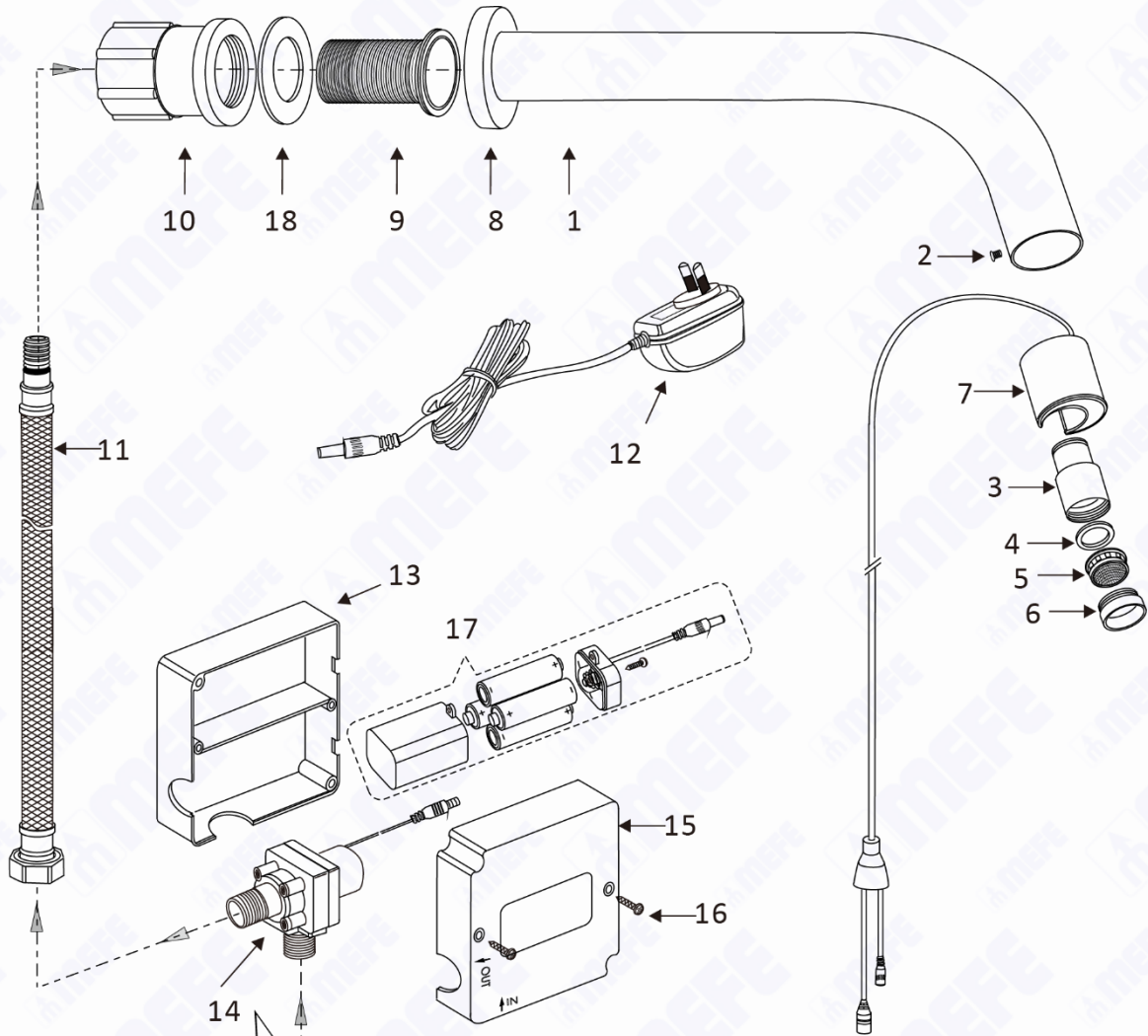
No.	Part #	Description	Material	No.	Part #	Description	Material
1.	673-050	Faucet Body	Brass	10.	673-057-1	PVC Elbow	PVC Plastic
2.	673-045	Screw	Stainless Steel 304	11.	673-058L	Braided Hose	Stainless Steel, Brass CW511L WMKA21165 SoftPex DN6
3.	673-054CS	Spout Adapter	Stainless Steel	12.	679-128	Power Adaptor	Electronic Hardware
4.	673-054B	Rubber Mat	NBR Rubber	13.	679-120	Housing	ABS Plastic
5.	673-054	Aerator	POM Plastic	14.	679-122	Solenoid Valve	POM Plastic, Rubber, Stainless Steel 304
6.	673-054AS	Spout Shell	Stainless Steel	15.	679-120	Housing	ABS Plastic
7.	673-106	Sensor	Electronic Hardware	16.	679-127	Screw	Stainless Steel 304
8.	673-055	Cover	Brass	17.	679-121	Battery Box	ABS Plastic
9.	673-056-1	Mounting Plate	Brass	18.	679-123	Screws	Stainless Steel 201

# Exploded View CAT 67305



No.	Part #	Description	Material	No.	Part #	Description	Material
1.	673-050	Faucet Body	Brass	10.	673-057-1	PVC Elbow	PVC Plastic
2.	673-045	Screw	Stainless Steel 304	11.	673-058L	Braided Hose	Stainless Steel 304
3.	673-054C	Spout Adapter	Brass	12.	679-128	Power Adaptor	Electronic Hardware
4.	673-054B	Rubber Mat	NBR Rubber	13.	679-120	Housing	ABS Plastic
5.	673-054	Aerator	POM Plastic	14.	679-122	Solenoid Valve	POM Plastic, Rubber, Stainless Steel 304
6.	673-054A	Spout Shell	Brass	15.	679-120	Housing	ABS Plastic
7.	673-106	Sensor	Electronic Hardware	16.	679-127	Screw	Stainless Steel 304
8.	673-055	Cover	Brass	17.	679-121	Battery Box	ABS Plastic
9.	673-056-1	Mounting Plate	Brass	18.	679-123	Screws	Stainless Steel 201

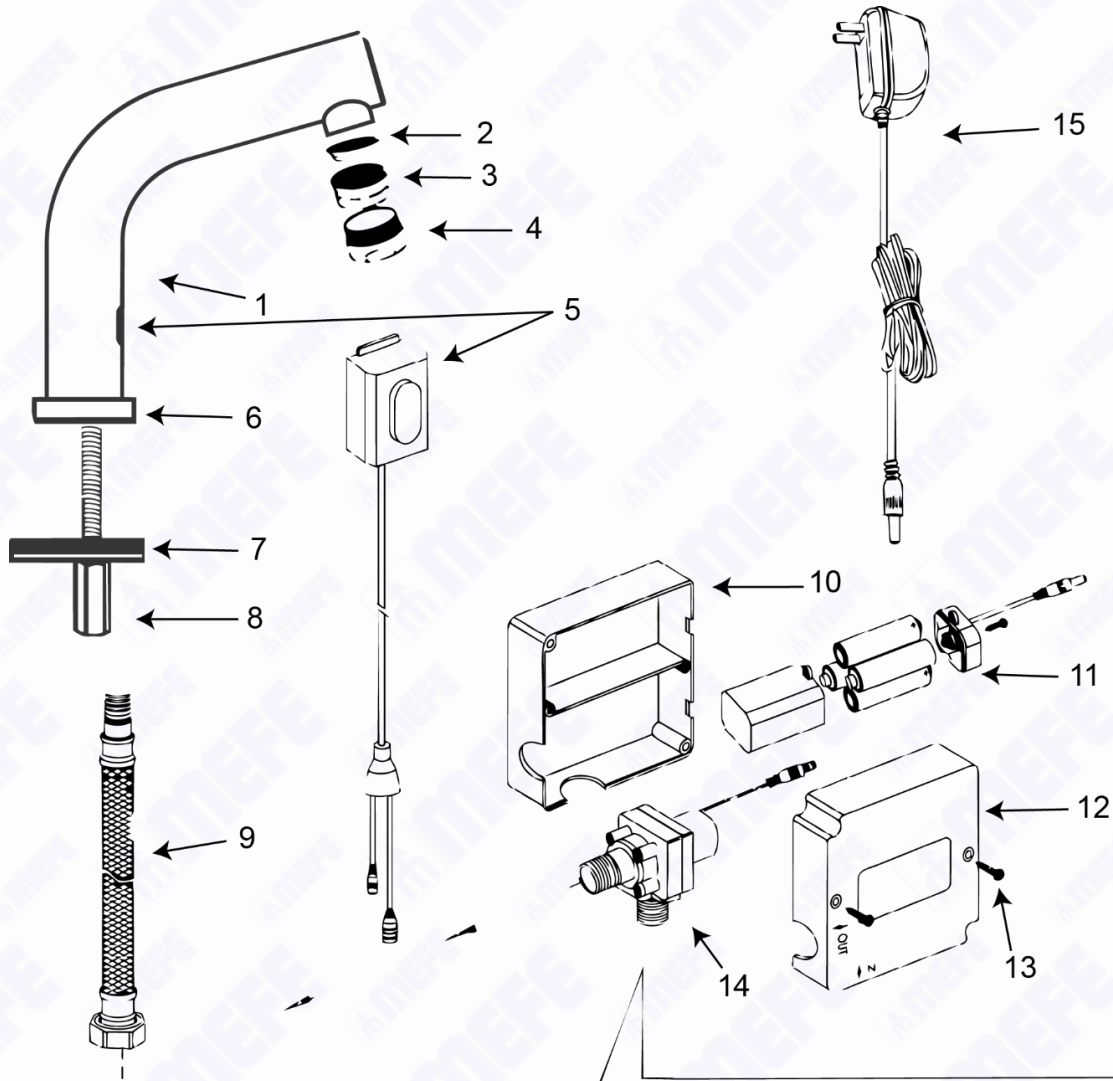
# Exploded View CAT 67306



- 14-1 - Adapter (SUS 304 Stainless)
- 14-2 - Body Valve (POM Plastic)
- 14-3 - Diaphragm (NBR rubber)
- 14-4 - Diaphragm skeleton (POM plastic)
- 14-5 - Spring needle (SUS 304 Stainless)
- 14-6 - Seat (POM Plastic)
- 14-7 - Glue (Silicone rubber)
- 14-8 - Core (430 Stainless)
- 14-9 - Spring (SUS 304 Stainless)
- 14-10 - Set (POM plastic)
- 14-11 - Solenoid valve (Brass+Iron)
- 14-12 - Cover (POM Plastic)

No.	Part #	Description	Material	No.	Part #	Description	Material
1.	673-050	Faucet Body	Brass	10.	673-057-2	Plastic Copper Nut	Plastic + Brass
2.	673-045	Screw	Stainless Steel 304	11.	673-058L	Braided Hose	Stainless Steel, Brass CW511L WMKA21165 SoftPex DN6
3.	673-054CS	Spout Adapter	Stainless Steel	12.	679-128	Power Adaptor	Electronic Hardware
4.	673-054B	Rubber Mat	NBR Rubber	13.	679-120	Housing	ABS Plastic
5.	673-054	Aerator	POM Plastic	14.	679-122	Solenoid Valve	POM Plastic, Rubber, Stainless Steel 304
6.	673-054AS	Spout Shell	Stainless Steel	15.	679-120	Housing	ABS Plastic
7.	673-106	Sensor	Electronic Hardware	16.	679-127	Screw	Stainless Steel 304
8.	673-055	Cover	Brass	17.	679-121	Battery Box	ABS Plastic
9.	673-056-2	SS Bolts	Stainless Steel 304	18.	679-123-1	Rubber Gasket	NBR Rubber

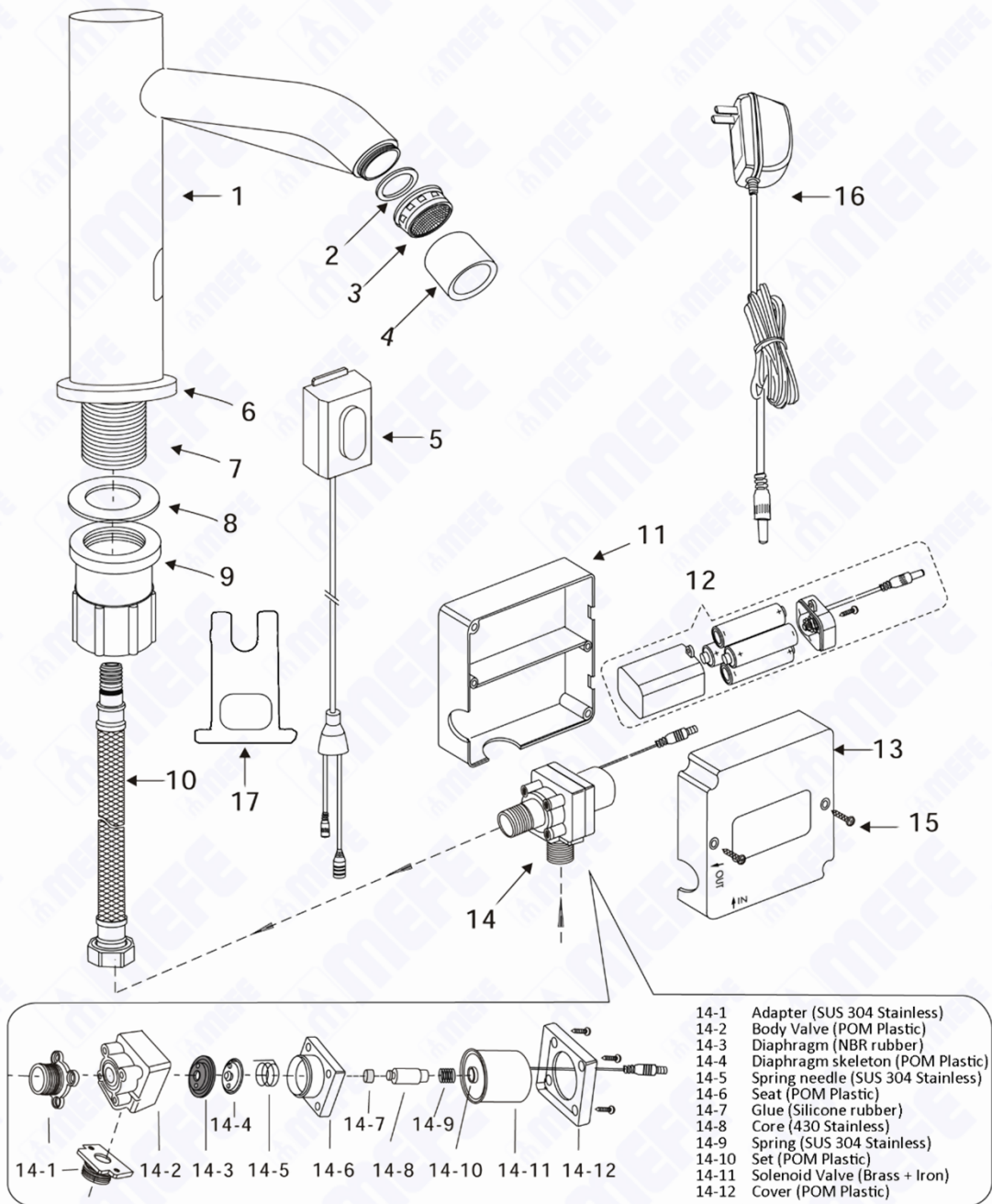
Exploded View CAT 679178



14-1 - Adapter (SUS 304 Stainless)  
 14-2 - Body Valve (POM Plastic)  
 14-3 - Diaphragm (NBR rubber)  
 14-4 - Diaphragm skeleton (POM plastic)  
 14-5 - Spring needle (SUS 304 Stainless)  
 14-6 - Seat (POM Plastic)  
 14-7 - Glue (Silicone rubber)  
 14-8 - Core (430 Stainless)  
 14-9 - Spring (SUS 304 Stainless)  
 14-10 - Set (POM plastic)  
 14-11 - Solenoid valve (Brass+Iron)  
 14-12 - Cover (POM Plastic)

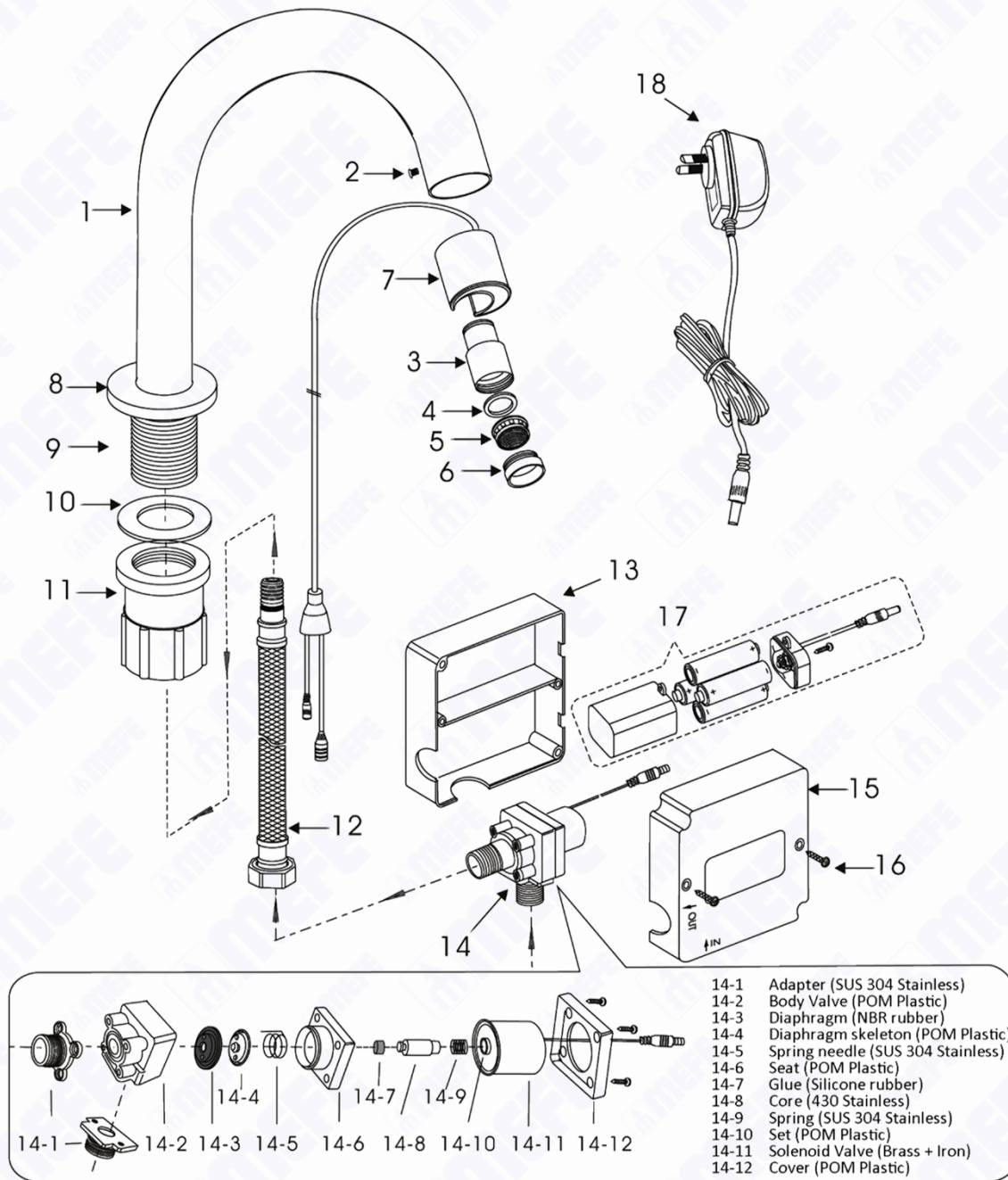
No.	Part #	Description	Material	No.	Part #	Description	Material
1.	679-800	Faucet Body	Stainless Steel 304	9.	673-058L	Braided Hose	Stainless Steel, Brass CW511L WMKA21165 SoftPex DN6
2.	673-033B	Rubber Mat	NBR Rubber	10.	679-120	Housing	ABS Plastic
3.	673-033	Aerator	POM Plastic	11.	679-121	Battery Box	ABS Plastic
4.	673-033D	Spout Shell	Stainless Steel 304	12.	679-120	Housing	ABS Plastic
5.	679-131	Sensor	Electronic Hardware	13.	679-127	Screw	Stainless Steel 304
6.	679-107C	Cover	Stainless Steel 304	14.	679-122	Solenoid Valve	POM Plastic, Rubber, Stainless Steel 304
7.	679-116	Rubber Mat	NBR Rubber	15.	679-128	Power Adaptor	Electronic Hardware
8.	679-118	Copper Nut	Brass				

Exploded View CAT 67917



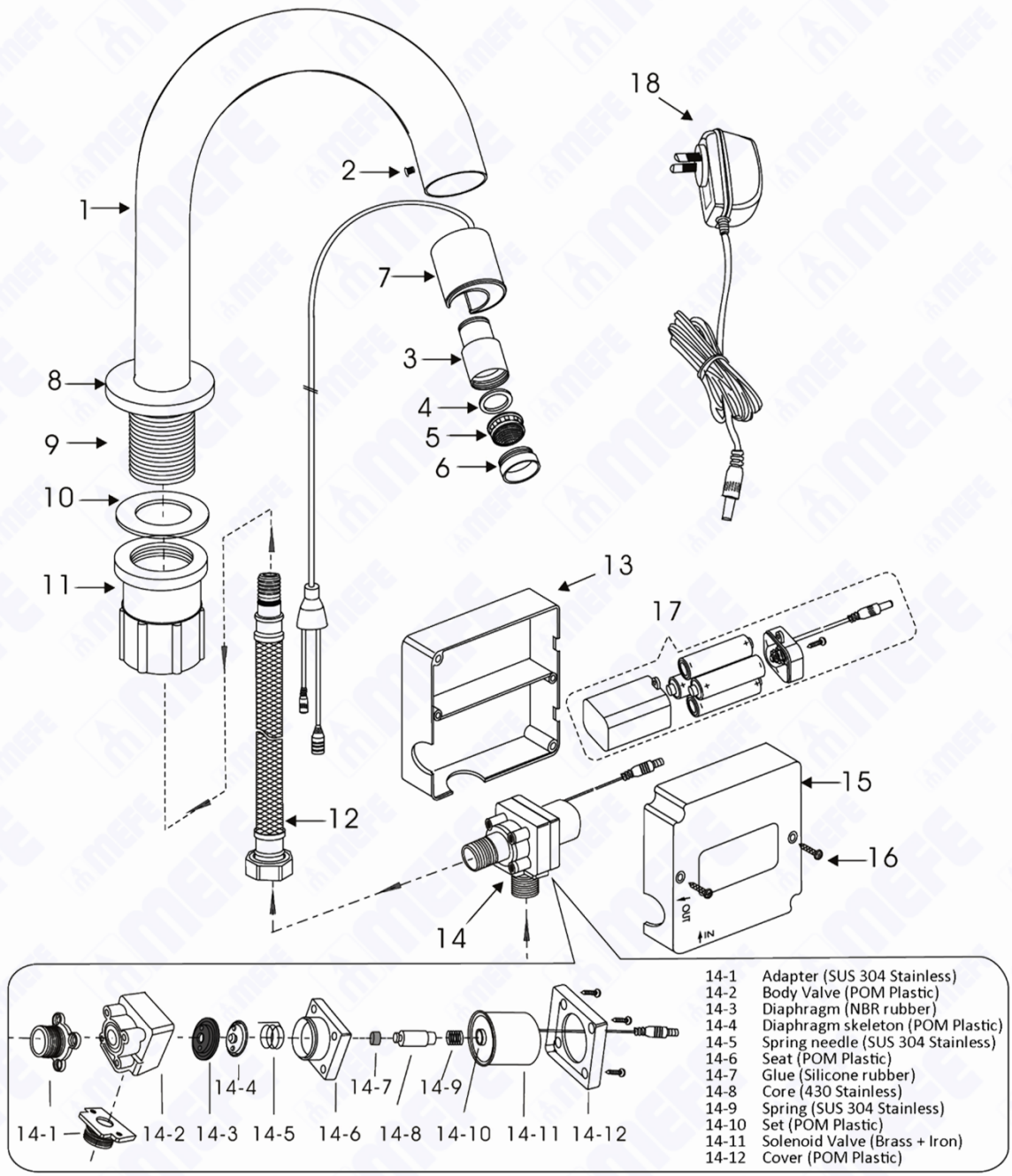
No.	Part #	Description	Material	No.	Part #	Description	Material
1.	679-170	Faucet Body	Stainless Steel 304	10.	673-058L	Braided Hose	Stainless Steel, Brass CW511L WMKA21165 SoftPex DN6
2.	679-172	Rubber Mat	NBR Rubber	11.	679-120	Housing	ABS Plastic
3.	679-173	Aerator	POM Plastic	12.	679-121	Battery Box	ABS Plastic
4.	679-171	Spout Shell	Stainless Steel 304	13.	679-120	Housing	ABS Plastic
5.	679-131	Sensor	Electronic Hardware	14.	679-122	Solenoid Valve	POM Plastic, Rubber, Stainless Steel 304
6.	679-107	Cover	Stainless Steel 304	15.	679-038	Screw	Stainless Steel 304
7.	679-108	S/Steel Bolt	Stainless Steel 304	16.	679-128	Power Adaptor	Electronic Hardware
8.	679-109	Mat	NBR Rubber	17.	679-129	Sensor Lock	POM Plastic
9.	679-110	Copper Nut	POM Plastic, Brass				

# Exploded View CAT 67910S



No.	Part #	Description	Material	No.	Part #	Description	Material
1.	679-100	Faucet Body	Brass	10.	679-109	Mat	NBR Rubber
2.	673-045	Screw	Stainless Steel 304	11.	679-110	Copper Nut	POM Plastic + Brass
3.	673-054CS	Spout Adapter	Stainless Steel	12.	673-058L	Braided Hose	Stainless Steel, Brass CW511L WMKA21165 SoftPex DN6
4.	673-054B	Rubber Mat	NBR Rubber	13.	679-120	Housing	ABS Plastic
5.	673-054	Aerator	POM Plastic	14.	679-122	Solenoid Valve	POM Plastic, Rubber, Stainless Steel 304
6.	673-054AS	Spout Shell	Stainless Steel	15.	679-120	Housing	ABS Plastic
7.	673-106	Sensor	Electronic Hardware	16.	679-127	Screw	Stainless Steel 304
8.	679-107B	Cover	Brass	17.	679-121	Battery Box	ABS Plastic
9.	679-108	S/Steel Bolt	Stainless Steel 304	18.	679-128	Power Adaptor	Electronic Hardware

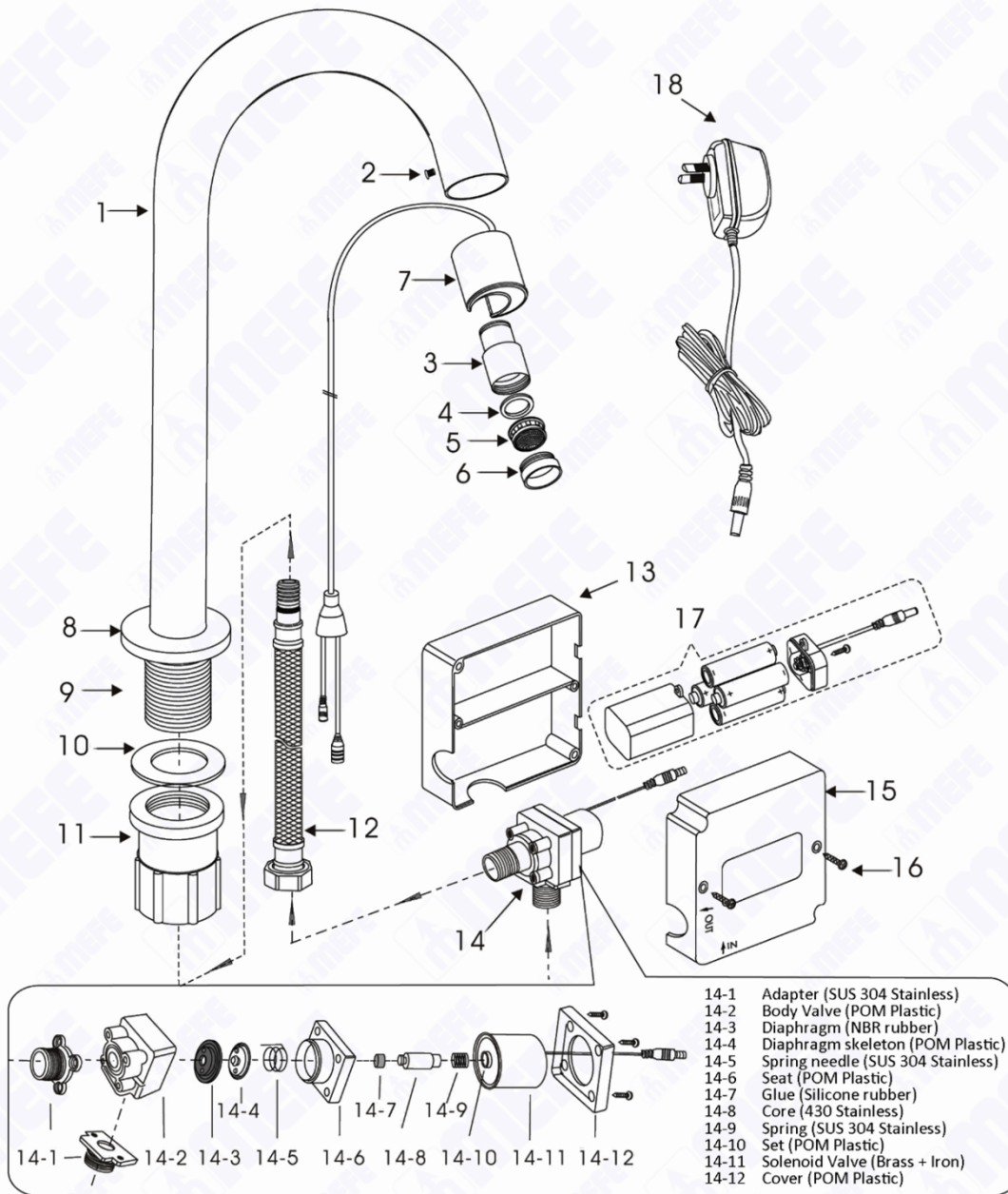
Exploded View CAT 67910



- 14-1 Adapter (SUS 304 Stainless)
- 14-2 Body Valve (POM Plastic)
- 14-3 Diaphragm (NBR rubber)
- 14-4 Diaphragm skeleton (POM Plastic)
- 14-5 Spring needle (SUS 304 Stainless)
- 14-6 Seat (POM Plastic)
- 14-7 Glue (Silicone rubber)
- 14-8 Core (430 Stainless)
- 14-9 Spring (SUS 304 Stainless)
- 14-10 Set (POM Plastic)
- 14-11 Solenoid Valve (Brass + Iron)
- 14-12 Cover (POM Plastic)

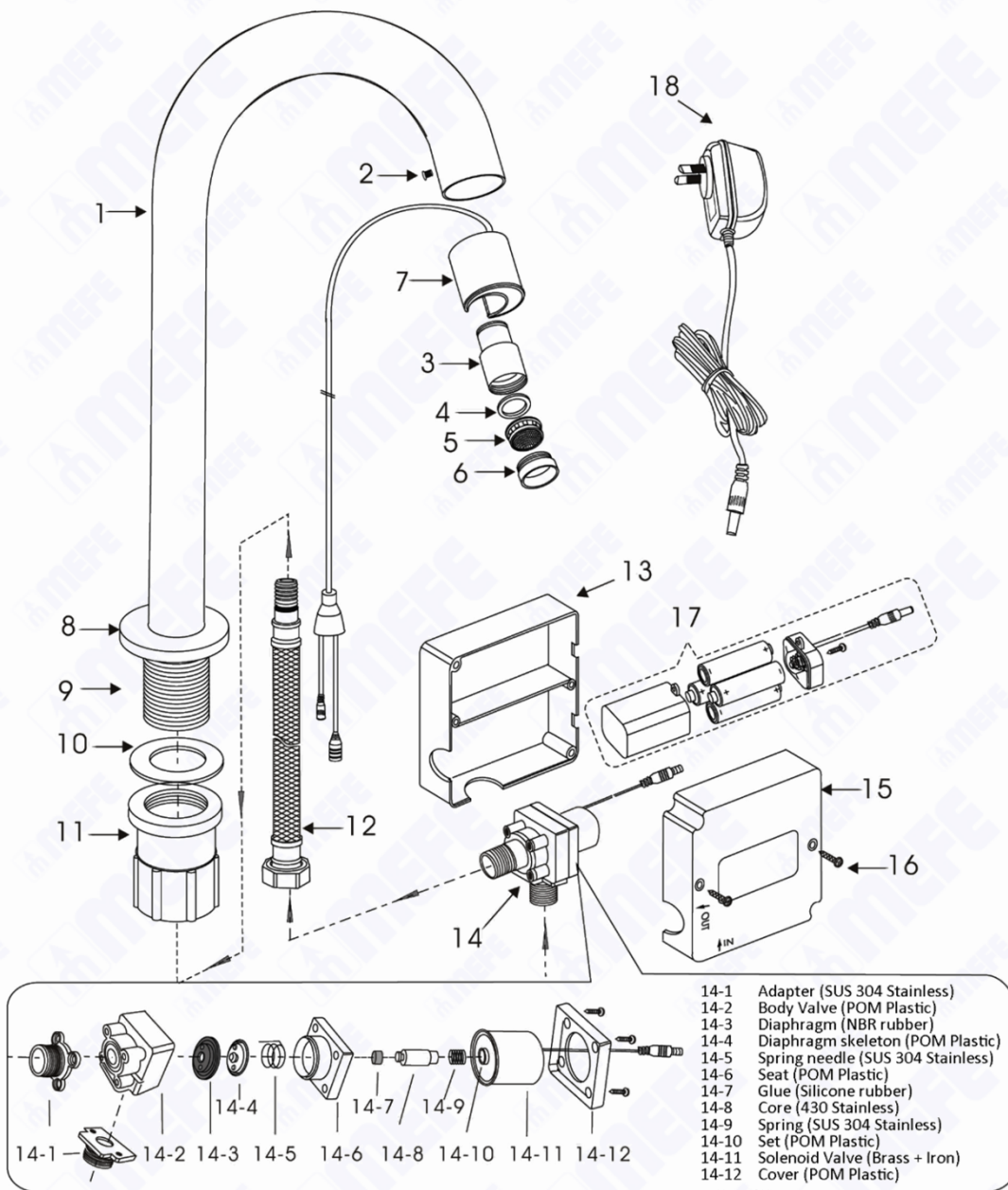
No.	Part #	Description	Material	No.	Part #	Description	Material
1.	679-100	Faucet Body	Brass	10.	679-109	Mat	NBR Rubber
2.	673-045	Screw	Stainless Steel 304	11.	679-110	Copper Nut	POM Plastic + Brass
3.	673-054C	Spout Adapter	Brass	12.	673-058L	Braided Hose	Stainless Steel 304
4.	673-054B	Rubber Mat	NBR Rubber	13.	679-120	Housing	ABS Plastic
5.	673-054	Aerator	POM Plastic	14.	679-122	Solenoid Valve	POM Plastic, Rubber, Stainless Steel 304
6.	673-054A	Spout Shell	Brass	15.	679-120	Housing	ABS Plastic
7.	673-106	Sensor	Electronic Hardware	16.	679-127	Screw	Stainless Steel 304
8.	679-107B	Cover	Brass	17.	679-121	Battery Box	ABS Plastic
9.	679-108	S/Steel Bolt	Stainless Steel 304	18.	679-128	Power Adaptor	Electronic Hardware

# Exploded View CAT 6791032S



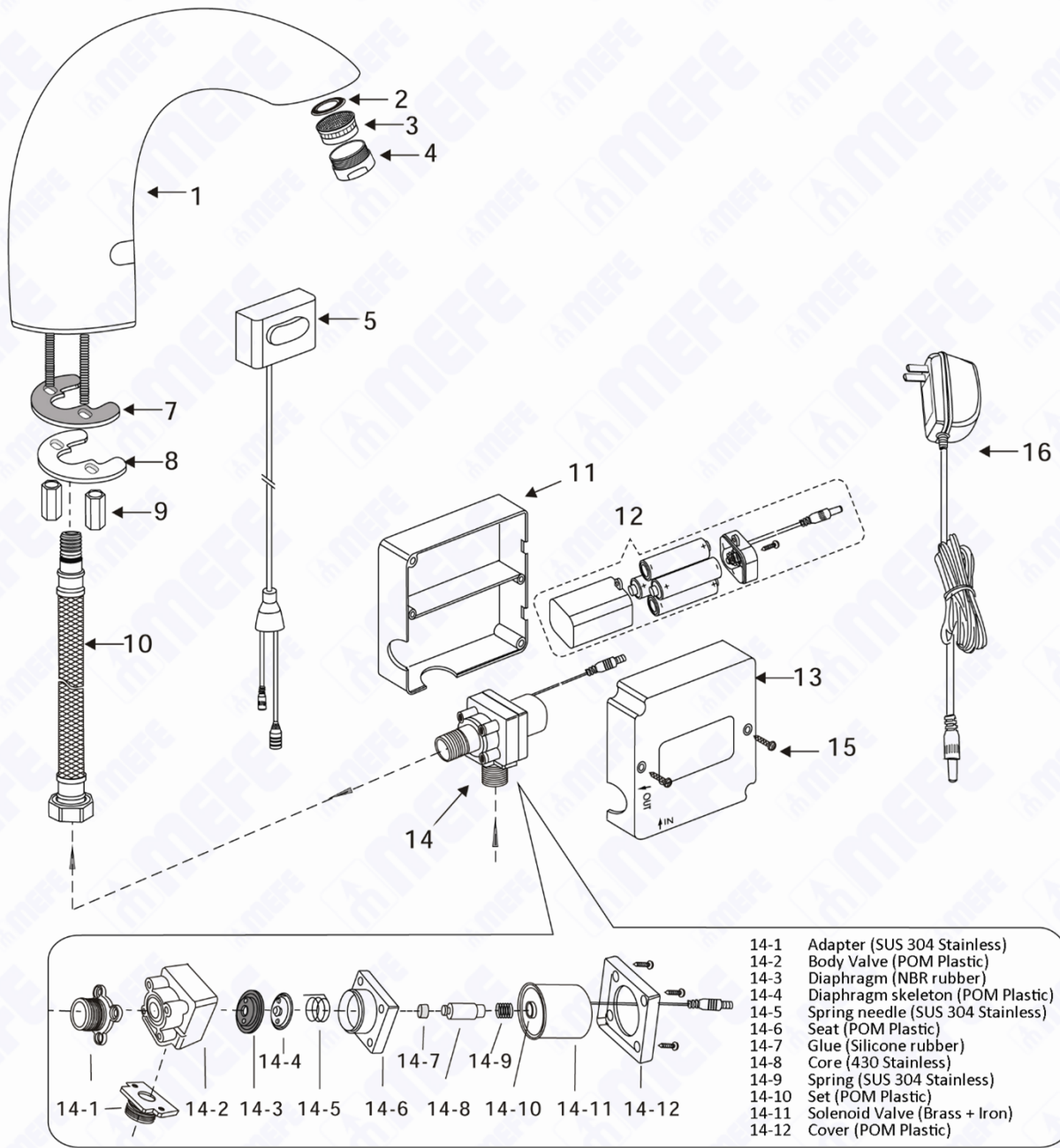
No.	Part #	Description	Material	No.	Part #	Description	Material
1.	679-103-200	Faucet Body	Brass	10.	679-109	Mat	NBR Rubber
2.	673-045	Screw	Stainless Steel 304	11.	679-110	Copper Nut	POM Plastic + Brass
3.	673-054CS	Spout Adapter	Stainless Steel	12.	673-058L	Braided Hose	Stainless Steel, Brass CW511L WMKA21165 SoftPex DN6
4.	673-054B	Rubber Mat	NBR Rubber	13.	679-120	Housing	ABS Plastic
5.	673-054	Aerator	POM Plastic	14.	679-122	Solenoid Valve	POM Plastic, Rubber, Stainless Steel 304
6.	673-054AS	Spout Shell	Stainless Steel	15.	679-120	Housing	ABS Plastic
7.	673-106	Sensor	Electronic Hardware	16.	679-127	Screw	Stainless Steel 304
8.	679-107B	Cover	Brass	17.	679-121	Battery Box	ABS Plastic
9.	679-108	S/Steel Bolt	Stainless Steel 304	18.	679-128	Power Adaptor	Electronic Hardware

# Exploded View CAT 6791032

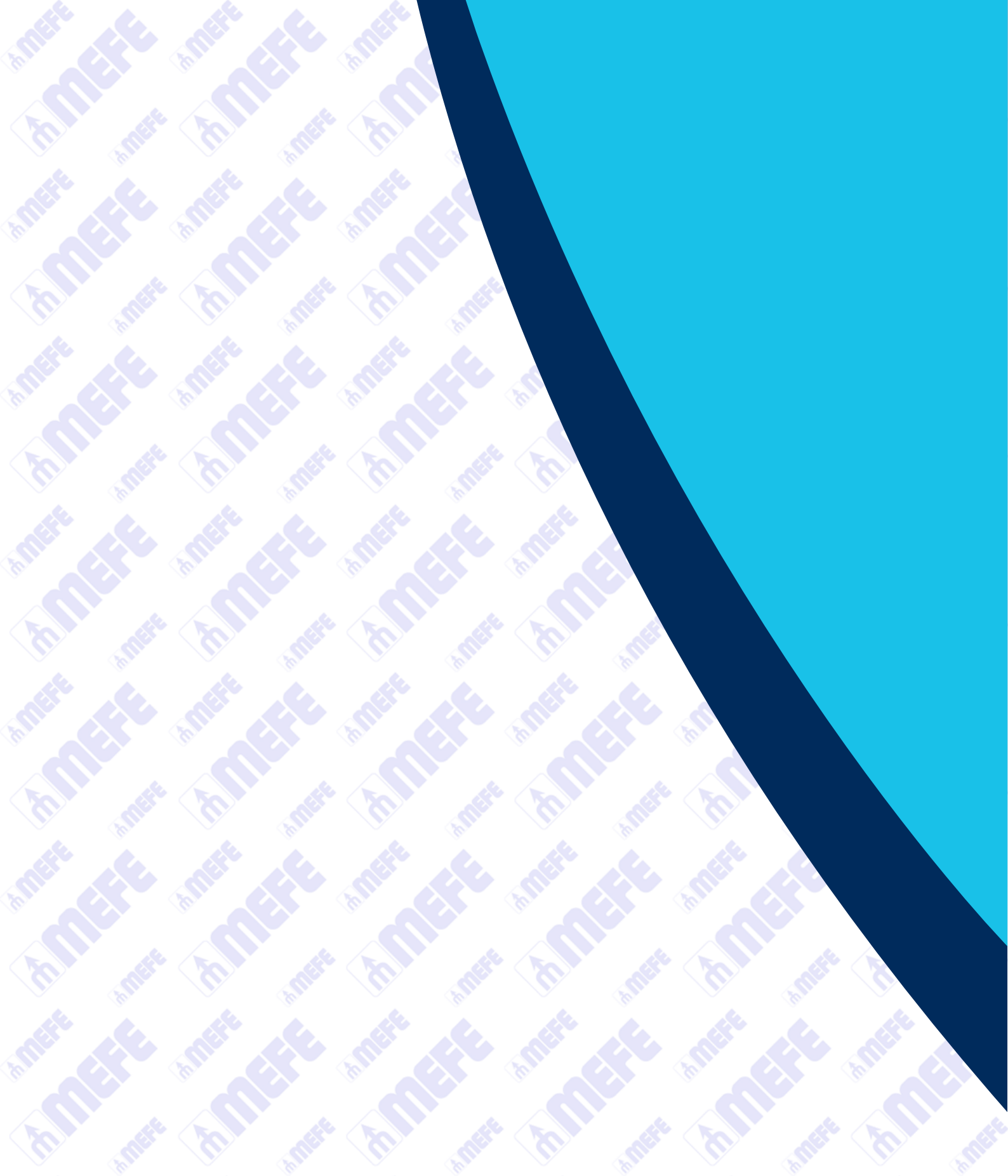


No.	Part #	Description	Material	No.	Part #	Description	Material
1.	679-103-200	Faucet Body	Brass	10.	679-109	Mat	NBR Rubber
2.	673-045	Screw	Stainless Steel 304	11.	679-110	Copper Nut	POM Plastic + Brass
3.	673-054C	Spout Adapter	Brass	12.	673-058L	Braided Hose	Stainless Steel 304
4.	673-054B	Rubber Mat	NBR Rubber	13.	679-120	Housing	ABS Plastic
5.	673-054	Aerator	POM Plastic	14.	679-122	Solenoid Valve	POM Plastic, Rubber, Stainless Steel 304
6.	673-054A	Spout Shell	Brass	15.	679-120	Housing	ABS Plastic
7.	673-106	Sensor	Electronic Hardware	16.	679-127	Screw	Stainless Steel 304
8.	679-107B	Cover	Brass	17.	679-121	Battery Box	ABS Plastic
9.	679-108	S/Steel Bolt	Stainless Steel 304	18.	679-128	Power Adaptor	Electronic Hardware

# Exploded View CAT 67911



No.	Part #	Description	Material	No.	Part #	Description	Material
1.	679-111	Faucet Body	Brass CW602N	9.	679-118	Copper Nut	Brass
2.	673-033B	Rubber Mat	NBR Rubber	10.	673-058L	Braided Hose	Stainless Steel 304
3.	673-033	Aerator	POM Plastic	11.	679-120	Housing	ABS Plastic
4.	673-033A	Spout Shell	Brass CW602N	12.	679-121	Battery Box	ABS Plastic
5.	679-115	Sensor	Electronic Hardware	13.	679-120	Housing	ABS Plastic
6.	N/A	N/A	N/A	14.	679-122	Solenoid Valve	POM Plastic, Rubber, Stainless Steel 304
7.	679-116	Rubber Mat	NBR Rubber	15.	679-127	Screw	Stainless Steel 304
8.	679-117	Brass Mat	Brass	16.	679-128	Power Adaptor	Electronic Hardware



[www.mefe.com.au](http://www.mefe.com.au) | 07 3283 4536 | [orders@mefe.com.au](mailto:orders@mefe.com.au)

23-25 Storie Street. Clontarf, QLD, 4019, Australia

3 June 2026